

LOWER POOL

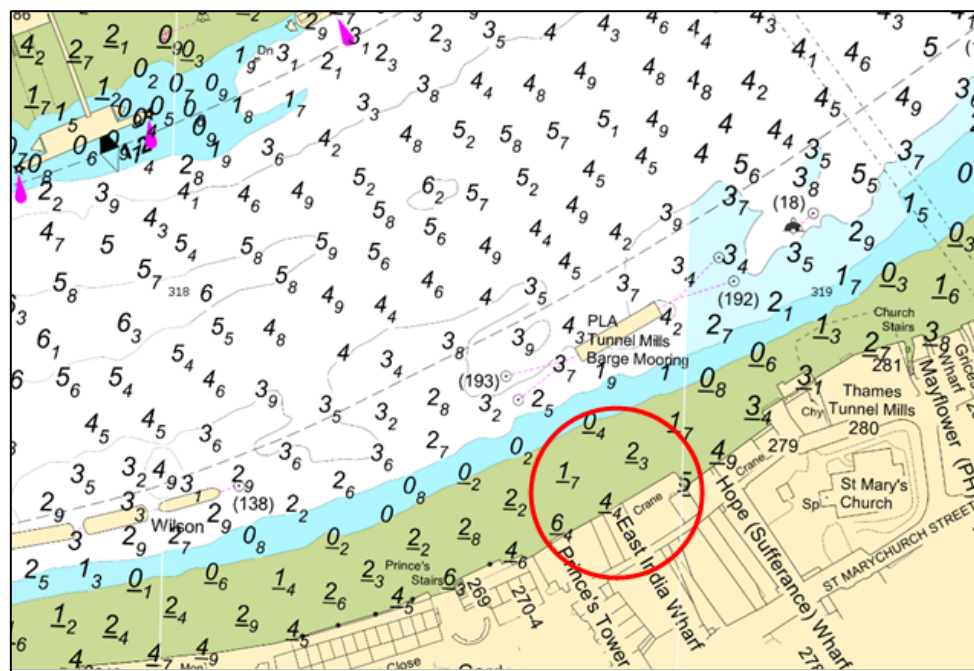
BOMBAY WHARF EXCLUSION ZONE

With immediate effect a **30 METRE EXCLUSION ZONE** has been established adjacent to **Bombay Wharf** in the **Lower Pool**.

A large portion of the crane structure has become unstable and poses a significant risk to any vessels navigating below.

The circular exclusion zone, as shown below, has a 30-metre diameter centred on the river wall immediately below the crane.

All vessels are **NOT** to navigate within this zone.



Further information will be broadcast by **London VTS** on **VHF Channel 14**.

26/02/2024

Port of London Authority
London River House, Royal Pier Road,
Gravesend, Kent DA12 2BG

JOSHUA REBETTES
Deputy Harbour Master

EXPIRY DATE: 31/03/2024

TO RECEIVE FUTURE NOTICES TO MARINERS BY **E-MAIL**,
PLEASE REGISTER VIA OUR WEBSITE pla.co.uk/Subscription-to-Newsletter

Telephone calls, VHF radio traffic, CCTV and radar traffic images may be recorded in the
VTS Centres at Gravesend and Woolwich



View all Active Notice to Mariners
using the above QR Code