

## BARN ELMS REACH TO BATTERSEA REACH

# ICHTHYOPLANKTON AND SMELT EGG SURVEY

Mariners are advised, starting on 6<sup>th</sup> February 2024 for approximately 9 weeks, vessel's *JACK D* and *GALATEA* will be undertaking Ichthyoplankton and Smelt Egg surveys and sampling, at weekly intervals, on the below indicated dates, over the corresponding High or Low waters. Surveys will involve the vessels maintaining position whilst samples are taken.

Survey #	Date	Day	Corresponding Tide
1	06/02/2024	Tuesday	H @ 10:00
2	13/02/2024	Tuesday	L @ 12:00
3	20/02/2024	Tuesday	H @ 11:00
4	27/02/2024	Tuesday	L @ 11:00
5	05/03/2024	Tuesday	H @ 08:00
6	12/03/2024	Tuesday	L @ 11:00
7	19/03/2024	Tuesday	H @ 09:00
8	26/03/2024	Tuesday	L @ 10:00
9	02/04/2024	Tuesday	H @ 07:00

**29/01/2024**

Port of London Authority  
London River House, Royal Pier Road,  
Gravesend, Kent DA12 2BG

**JOSHUA REBBETTES**  
Deputy Harbour Master

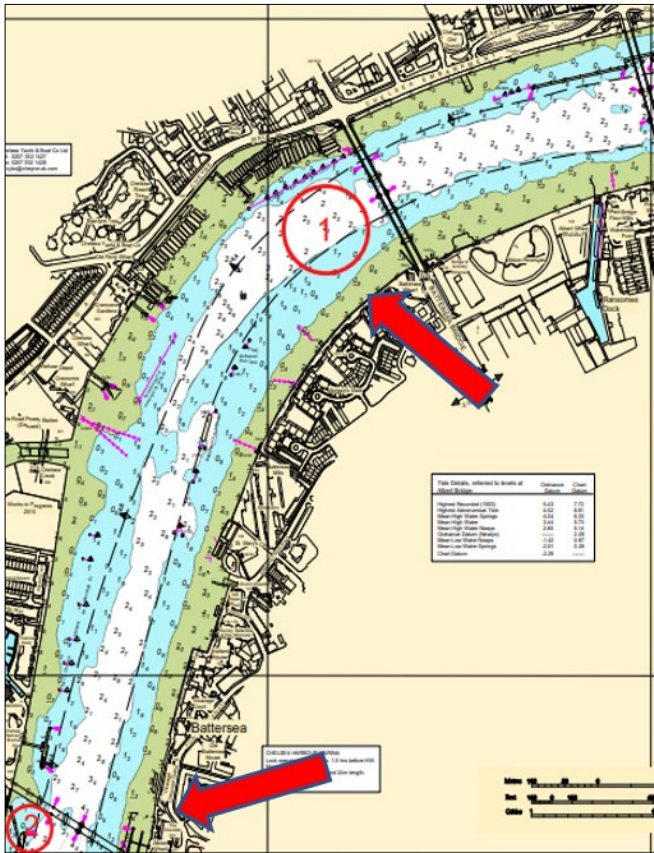
**EXPIRY DATE: 05/04/2024**

TO RECEIVE FUTURE NOTICES TO MARINERS BY **E-MAIL**,  
PLEASE REGISTER VIA OUR WEBSITE [pla.co.uk/Subscription-to-Newsletter](http://pla.co.uk/Subscription-to-Newsletter)

Telephone calls, VHF radio traffic, CCTV and radar traffic images may be recorded in the  
VTS Centres at Gravesend and Woolwich

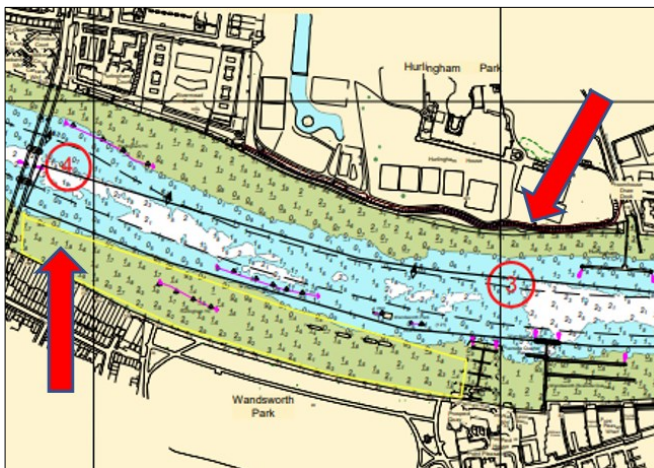


Five (5) locations between Barns Elm Reach and Battersea Reach may be surveyed, these can be seen circled in red, in the chartlets below.



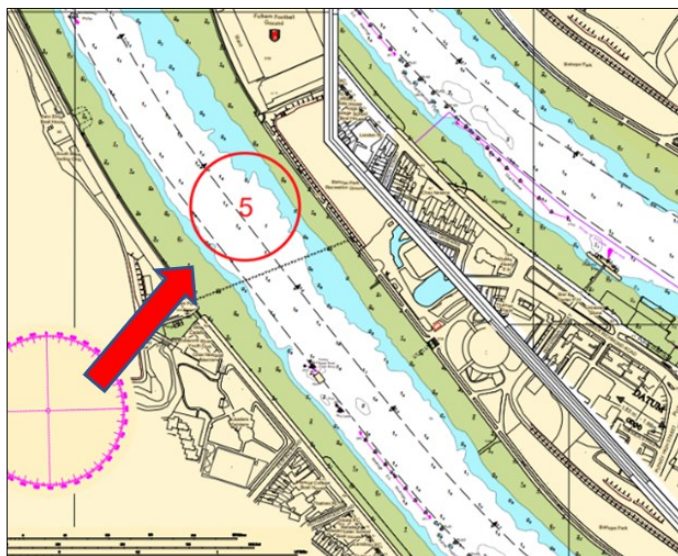
Location 1: Battersea Reach, Upstream of Battersea Bridge in vicinity of Chelsea Yacht and Boat Moorings.

Location 2: Battersea Reach, Upstream of Battersea Rail Bridge in vicinity of Imperial Wharf Marina.



Location 3: Wandsworth Reach, upstream of Hurlingham Pier.

Location 4: Wandsworth Reach, downstream of Fulham Rail Bridge, in vicinity of Hurlingham Court.



Location 5: Barns Elm Reach (Lower), in vicinity of Bishops Park Recreational Ground.

Requests for vessels to proceed with caution or pass at slow speed will be made by London VTS on VHF ch.14, in accordance with the PLA Port Information Guide, under "London VTS", section 4. Any further details will be broadcast by London VTS.

Vessels *JACK D* and *GALATEA* should display International Code Flags 'Romeo Yankee (RY)' and a sign with the word 'SURVEY' on either side of the vessel as appropriate:

RY:



**SURVEY**

Mariners are requested to approach and pass with **great caution**. Mariners must ensure that wash and draw off are kept to a minimum when passing the survey vessels.