

NOTICE TO MARINERS L7 of 2021

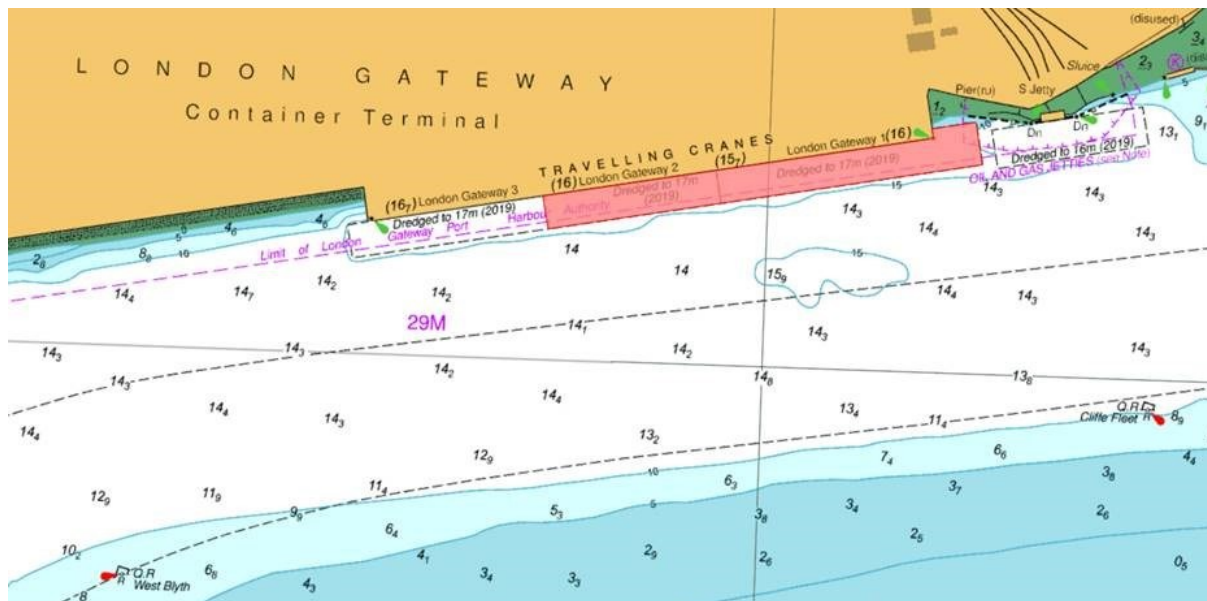
SEA REACH DREDGING OPERATIONS

On or around 4th May 2021, Dredger 'MAAS' will commence plough dredging operations at London Gateway, Berths 1 & 2. Dredging will take place on the ebb tide only, with expected completion around 6th May 2021. The timing of the works may be adjusted for operational reasons - further details will be broadcast by London VTS on VHF Channel 68.

The work may require vessels to proceed with caution or at slow speed. Such requests will be broadcast by London VTS, as per the requirements detailed in Notice to Mariners No. 8 of 2021.

The vessel is required to display lights and signals as per the International Regulations for Preventing Collisions at Sea.

The chartlet below indicates the approximate footprint of the works.



30th April 2021

Port of London Authority
London River House, Royal Pier Road,
Gravesend, Kent DA12 2BG

STEPHANIE SMITH
DEPUTY HARBOUR
MASTER



EXPIRY DATE: 10th May 2021
TO RECEIVE FUTURE NOTICES TO MARINERS BY E-MAIL,
PLEASE REGISTER VIA OUR WEBSITE www.pla.co.uk
Telephone calls, VHF radio traffic, CCTV and radar traffic images may be recorded in the VTS Centres at
Gravesend and Woolwich
All Current Notices to Mariners can be found here - <http://www.pla.co.uk/Safety/Regulations-and-Guidance/Notices-to-Mariners/Notices-to-Mariners>