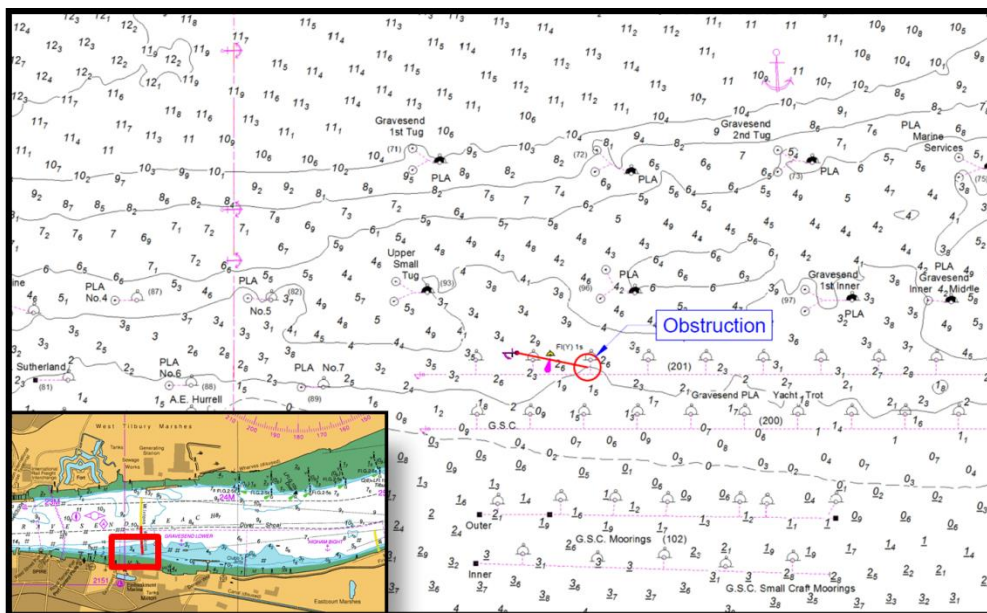


## NOTICE TO MARINERS L5 of 2018

### GRAVESEND REACH

## OBSTRUCTION – SUNKEN PONTOON

Mariners and recreational users are advised that following the recent severe weather a flotation pontoon has come adrift and sunk in the **Gravesend PLA Yacht Trot** in Gravesend Reach.



The pontoon is currently anchored to the river bed and will be fitted with a yellow flashing special mark.

Anyone in the area should navigate with caution when passing the trots especially at low water.

Attempts to recover the pontoon will be carried out as soon as possible.

For the latest information contact London VTS on VHF Channel 68 or by telephone on 01474 560311.

**2 March 2018**

Port of London Authority  
London River House, Royal Pier Road,  
Gravesend, Kent DA12 2BG

**BOB BAKER**  
CHIEF HARBOUR MASTER



EXPIRY DATE: 31<sup>st</sup> March 2018  
TO RECEIVE FUTURE NOTICES TO MARINERS BY **E-MAIL**,  
PLEASE REGISTER VIA OUR WEBSITE [www.pla.co.uk](http://www.pla.co.uk)  
**Telephone calls, VHF radio traffic, CCTV and radar traffic images may  
be recorded in the VTS Centres at Gravesend and Woolwich**

