

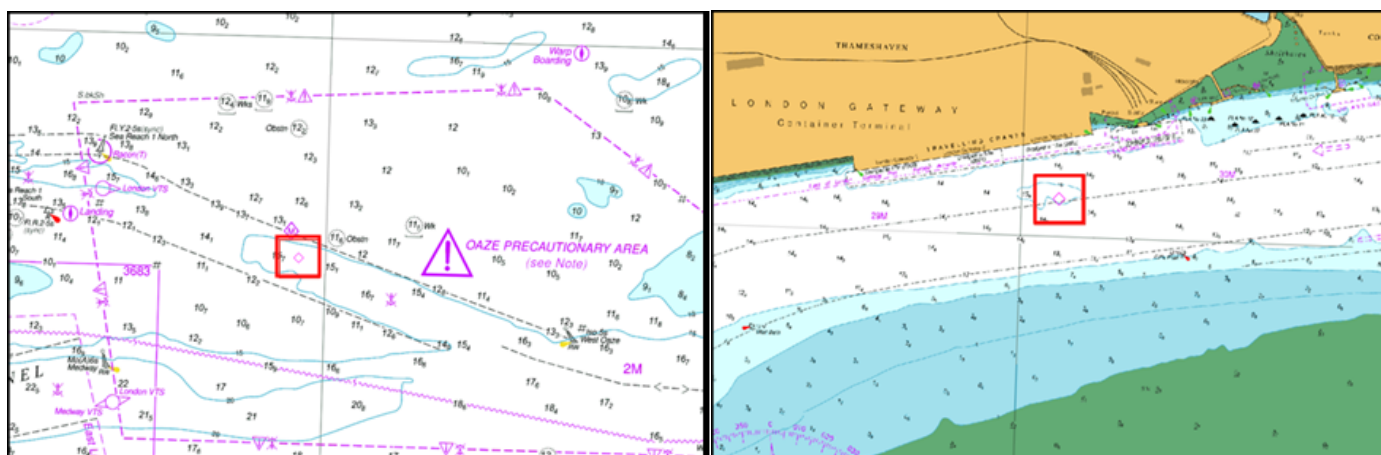
SEA REACH

TIDAL FLOW MONITORING EQUIPMENT

Mariners are hereby notified that on or around 2nd November 2023, there will be a deployment of tidal flow monitoring equipment in two locations in Sea Reach; in the vicinity of West Oaze and off London Gateway. The equipment will be removed on or around 17th November 2023.

Deployment will be carried out by the Port of London Authority vessel MAPLIN. It is important to note that this equipment has been strategically positioned to avoid any disturbance to under keel clearance and will not require the use of a surface marker.

Exact positions of the equipment deployments are marked in red on the chartlets below.



Mariners are urged to exercise caution while navigating in these areas for the duration. Further details will be broadcast by London VTS on VHF Channel 68.

26/10/2023

Port of London Authority
London River House, Royal Pier Road,
Gravesend, Kent DA12 2BG

LYN KINDLEN-FUNNEL
Harbour Master

EXPIRY DATE: 24/11/2023

TO RECEIVE FUTURE NOTICES TO MARINERS BY **E-MAIL**,
PLEASE REGISTER VIA OUR WEBSITE pla.co.uk/Subscription-to-Newsletter

Telephone calls, VHF radio traffic, CCTV and radar traffic images may be recorded in the
VTS Centres at Gravesend and Woolwich

