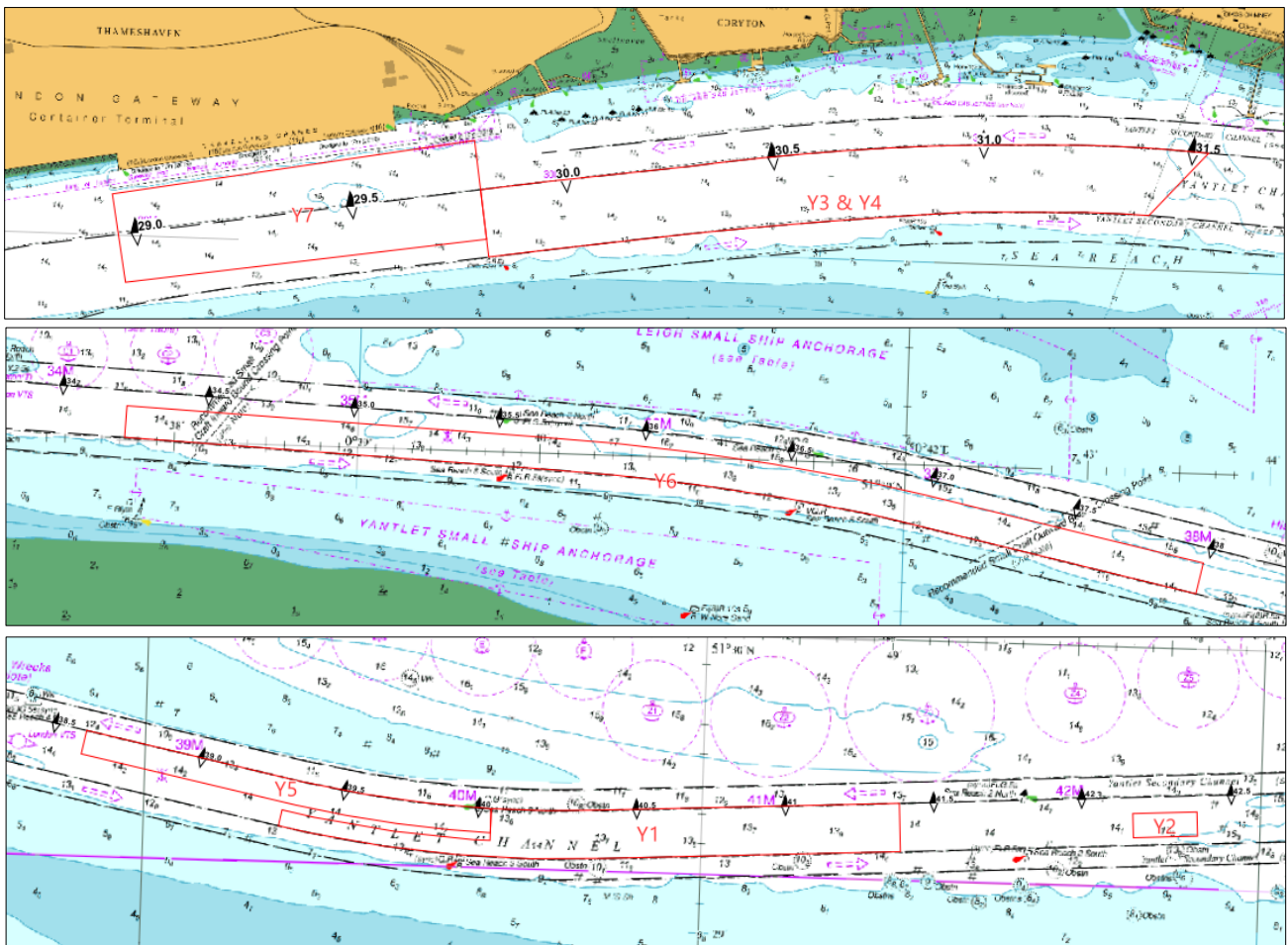


## NOTICE TO MARINERS L18 of 2020

### SEA REACH DREDGING OPERATIONS

*(This notice replaces L16 of 2020 which is hereby cancelled)*

The programme of maintenance dredging continues in Sea Reach. The dredgers 'MEUSE RIVER' (115.8m LOA) and 'DHAMRA' (31m LOA) will be continuing to conduct Water Injection/Agitation Dredging on the ebb tide at a number of locations between London Gateway and Sea Reach 1 Buoys, as indicated in the chartlets below. The survey vessel 'LIBERTAS' will also be working in the area, in support of the operations.



The MEUSE RIVER will be under the conduct of a PLA Pilot at all times whilst underway, and will be capable of re-positioning to facilitate navigation, provided sufficient notice is given. During dredging operations (on the ebb tide only), the positions of the MEUSE RIVER and DHAMRA will be included in the routine half-hourly broadcasts by London VTS.

**Whilst the MEUSE RIVER is undertaking dredging operations, all vessels intending to transit the area that require the use of the main Yantlet Channel must advise London VTS of their ETA at the MEUSE RIVER's location, a minimum of 30 mins in advance, to ensure effective traffic management.**

Further details will be broadcast by London VTS on VHF Channels 68 & 69.

---

**5 November  
2020**

Port of London Authority  
London River House, Royal Pier Road,  
Gravesend, Kent DA12 2BG

**Miles Featherstone  
Deputy Harbour Master**



TO RECEIVE FUTURE NOTICES TO MARINERS BY **E-MAIL**,  
PLEASE REGISTER VIA OUR WEBSITE [www.pla.co.uk](http://www.pla.co.uk)  
**Telephone calls, VHF radio traffic, CCTV and radar traffic images may  
be recorded in the VTS Centres at Gravesend and Woolwich**  
**All Current Notices to Mariners can be found here -**  
**<http://www.pla.co.uk/Safety/Regulations-and-Guidance/Notices-to-Mariners/Notices-to-Mariners>**

