

## NOTICE TO MARINERS L15 of 2020

### AIDS TO NAVIGATION CHANGES

The Port of London Authority, as the Local Lighthouse Authority, has consulted with Trinity House (the General Lighthouse Authority) and agreed the following changes to Aids to Navigation (AtoN). These changes will have immediate effect.

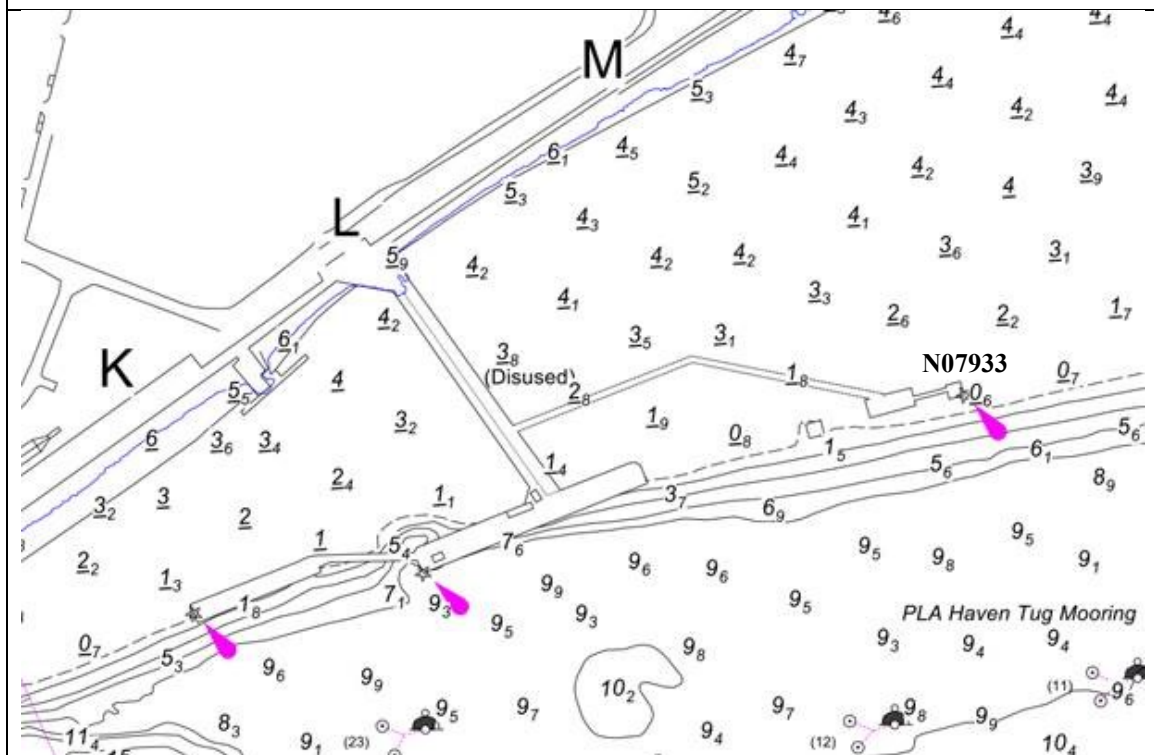
**Due to the removal of the structure, the following AtoN are discontinued:**

N11559 Ferry Pier West Street Lower Lighted Beacon (2.F.R vert)  
in position Lat. 51° 26.746' N Long. 000° 22.114' E

N11559 Ferry Pier West Street Lower Lighted Beacon (2.F.R vert)  
in position Lat. 51° 26.746' N Long. 000° 22.114' E

**The following AtoN has been established:**

N07933 "Shellhaven M Jetty Lower" lighted beacon in position Lat. 51° 30.409' N Long. 000° 31.078' E



**10 September  
2020**

Port of London Authority  
London River House, Royal Pier Road,  
Gravesend, Kent DA12 2BG

**Cathryn Spain  
Harbour Master (Lower)**



TO RECEIVE FUTURE NOTICES TO MARINERS BY **E-MAIL**,  
PLEASE REGISTER VIA OUR WEBSITE [www.pla.co.uk](http://www.pla.co.uk)  
Telephone calls, VHF radio traffic, CCTV and radar traffic images may  
be recorded in the VTS Centres at Gravesend and Woolwich  
All Current Notices to Mariners can be found here -  
<http://www.pla.co.uk/Safety/Regulations-and-Guidance/Notices-to-Mariners/Notices-to-Mariners>

