

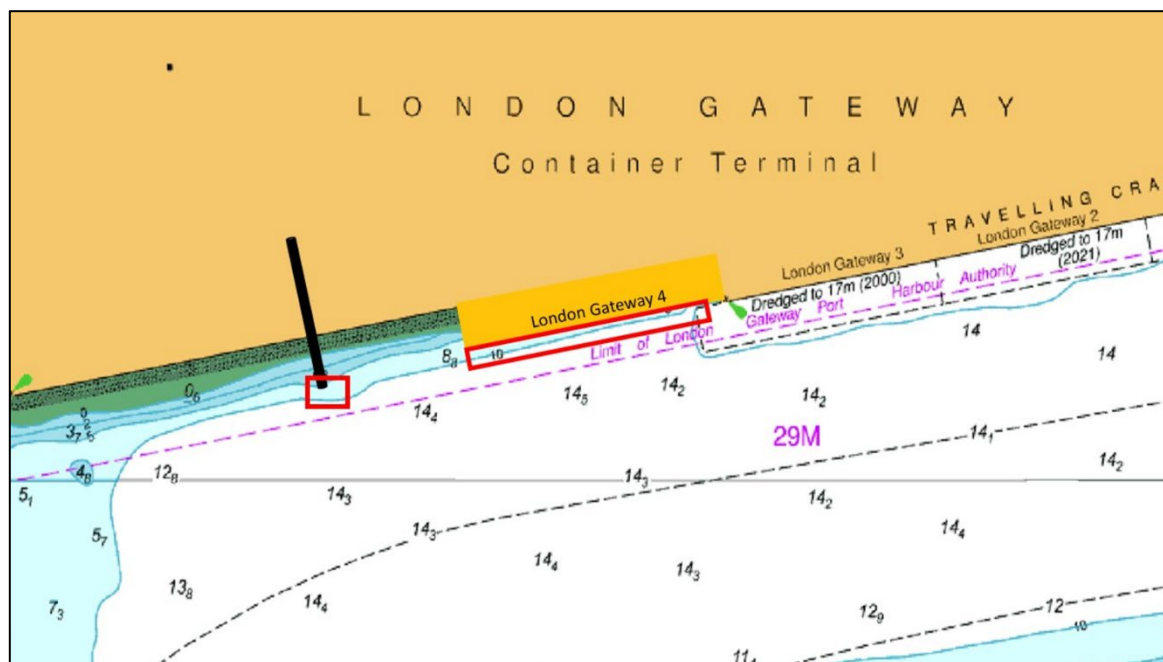
PORT OF LONDON
AUTHORITY

NOTICE TO MARINERS
SEA REACH

DREDGING OPERATIONS

L11-24

On or around the **25th February 2024** the vessel MEUSE RIVER will commence trailer suction dredging at London Gateway Port Berth 4, Sea Reach. The vessel will discharge using a floating pipeline to the east of Berth No 4. Dredging will take place 24/7 with expected completion to be around 3rd March 2024.



The MEUSE RIVER is required to remain a minimum 75m clearance from vessels berthing or departing at No 3 berth and will display lights and signals as per the International Regulations for Preventing Collisions at sea and maintain a listening watch on VHF channel 68

Further details will be broadcast by **London VTS** on **VHF Channel 68**.

16/02/2024

Port of London Authority
London River House, Royal Pier Road,
Gravesend, Kent DA12 2BG

LYN KINDLEN-FUNNELL
Harbour Master

EXPIRY DATE: 08/03/2024

TO RECEIVE FUTURE NOTICES TO MARINERS BY E-MAIL,
PLEASE REGISTER VIA OUR WEBSITE pla.co.uk/Subscription-to-Newsletter

Telephone calls, VHF radio traffic, CCTV and radar traffic images may be recorded in the
VTS Centres at Gravesend and Woolwich

