



PORT OF LONDON
AUTHORITY

Port of London Authority
Chart Correction Advice
Date: 29th February 2024



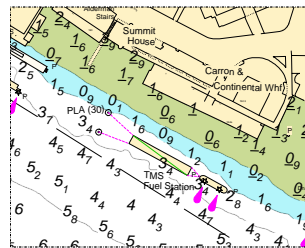
CCA No: 2024/5

Chart: Upper Pool

PLA Chart No. 318
HO Ref No. 113-318-266
Previous Chart Correction: 2024/1

The accompanying block correction shows:

New twin screw swing mooring and fuel barge installed below President Quay, Wapping
[New mooring named PLA and numbered (30) and "Fuel Barge" renamed as
"TMS Fuel Station"]



For further information see the PLA hydrographic service website:

<http://www.pla.co.uk/Safety/PLA-Hydrographic-Service-Published-Surveys>