



PORT OF LONDON
AUTHORITY

Port of London Authority
Chart Correction Advice
Date: 7th February, 2024



CCA No: 2024/3

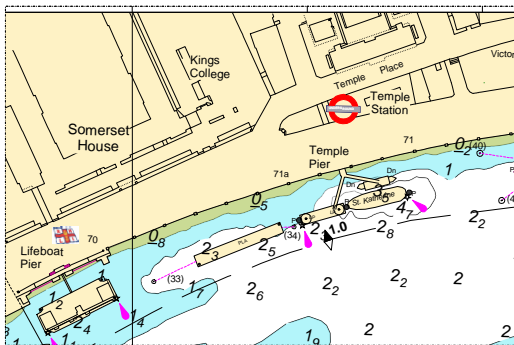
Chart: Lambeth Reach & Kings Reach

PLA Chart No. 316
HO Ref No. 113-316-178
Previous Chart Correction: 2023/33

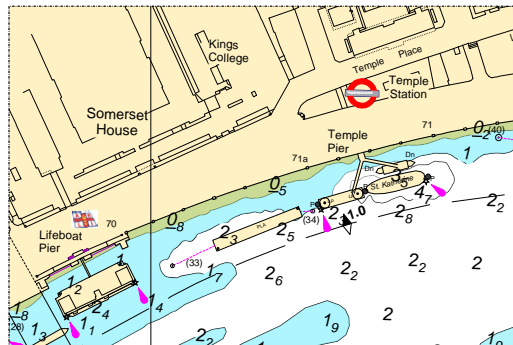
PLA Chart No. 317
HO Ref No. 113-317-130
Previous Chart Correction: 2024/1

The accompanying block correction shows
The removal of craft inside Temple Pier &
Revised revised topography & depths upriver of Hungerford Bridge

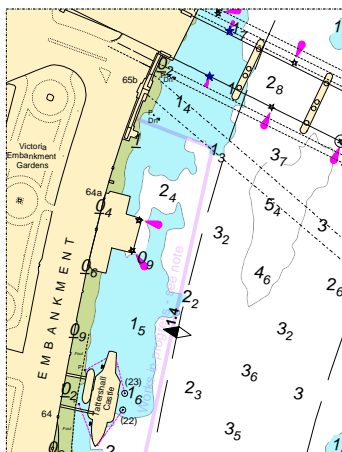
PLA 316



PLA 317



PLA 316



For further information see the PLA hydrographic service website:

<http://www.pla.co.uk/Safety/PLA-Hydrographic-Service-Published-Surveys>