



PORT OF LONDON
AUTHORITY

Port of London Authority Chart Correction Advice Date: 12th January 2024



CCA No: 2024/2

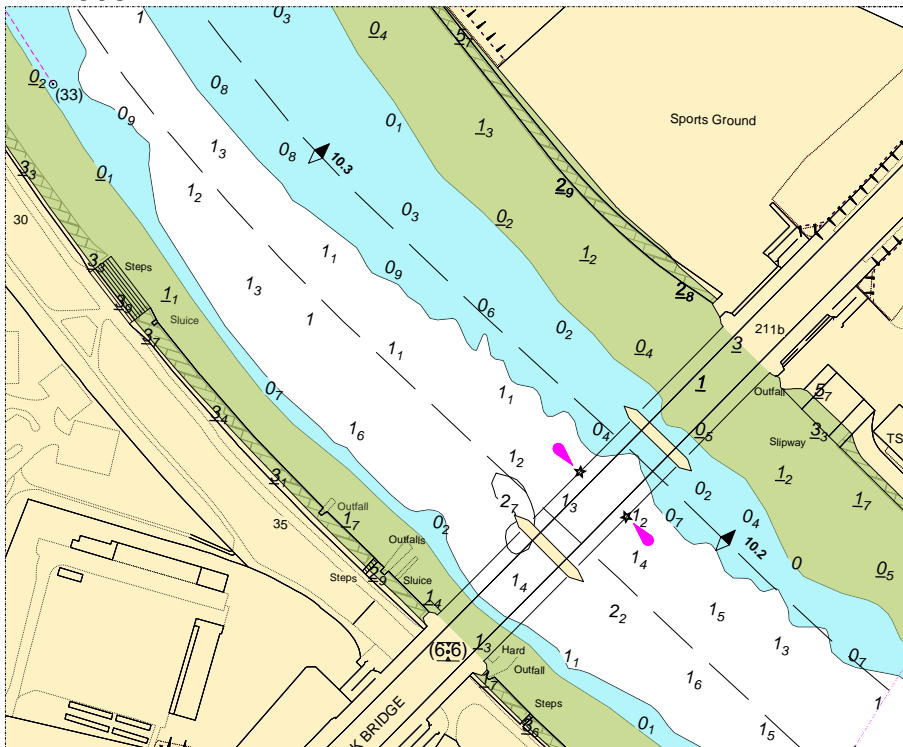
Chart: Mortlake Reach

PLA Chart No. 308
HO Ref No. 113-308-017
Previous Chart Correction: NE

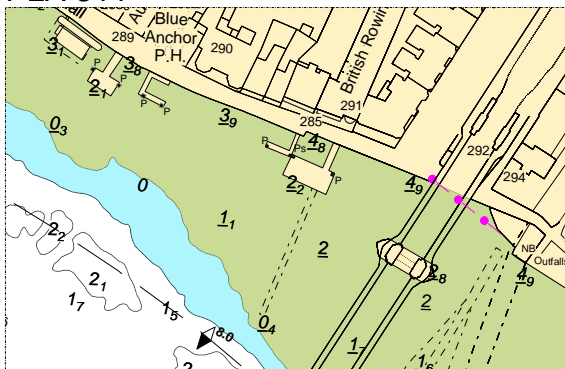
PLA Chart No. 311
HO Ref No. 113-311-017
Previous Chart Correction: 2023/32

The accompanying block correction shows:
Revised Depths & Contours in the vicinity of Chiswick Bridge
and new pontoon above Hammersmith Bridge

PLA 308



PLA 311



For further information see the PLA hydrographic service website:

<http://www.pla.co.uk/Safety/PLA-Hydrographic-Service-Published-Surveys>