



PORT OF LONDON
AUTHORITY

Port of London Authority
Chart Correction Advice
Date: 19th January, 2023



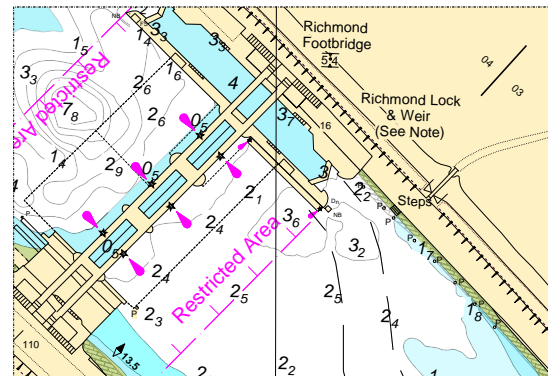
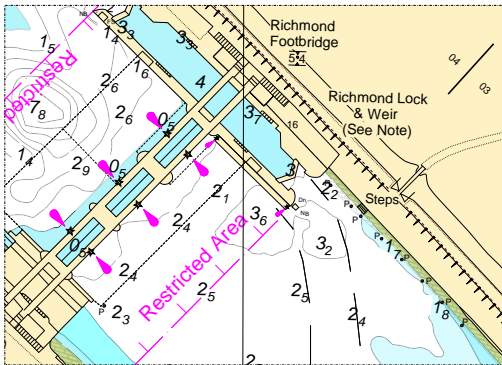
CCA No: 2023/2

Chart: Richmond Lock

PLA Chart No. 304
HO Ref No. 113-304-081
Previous Chart Correction: 2002/1

PLA Chart No. 303
HO Ref No. 113-303-014
Previous Chart Correction: 2019/23

The accompanying block correction shows:
New lights (2 red vertical) on Richmond Lock upper pontoon



For further information see the PLA hydrographic service website:

<http://www.pla.co.uk/Safety/PLA-Hydrographic-Service-Published-Surveys>