



PORT OF LONDON  
AUTHORITY

Port of London Authority  
Chart Correction Advice  
Date: 25th January, 2023



**CCA No: 2023/1**

Charts: Woolwich Reach Upper to Barking Reach

PLA Chart No. 322

HO Ref No. 113-322-360

Previous Chart Correction: 2022/12

PLA Chart Nos. 323-326

New HO Ref No. 113-323-387

This Chart Correction Advice is for new charts 322-326 due to:

113-324-108

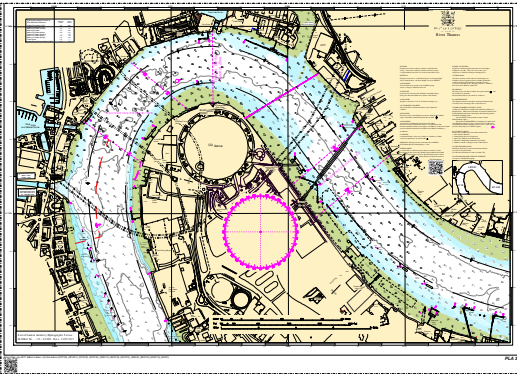
Revised soundings in the eastern part of PLA chart 322 and

113-325-312

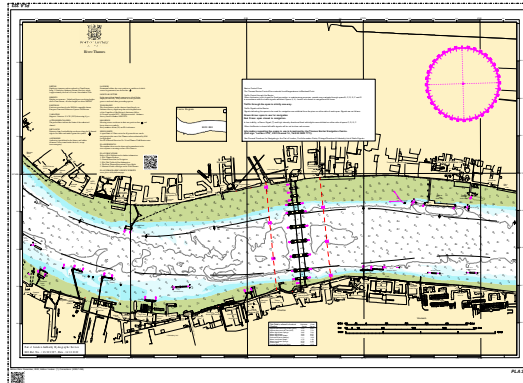
New Editions of PLA charts 323 to 326 inc

113-326-260

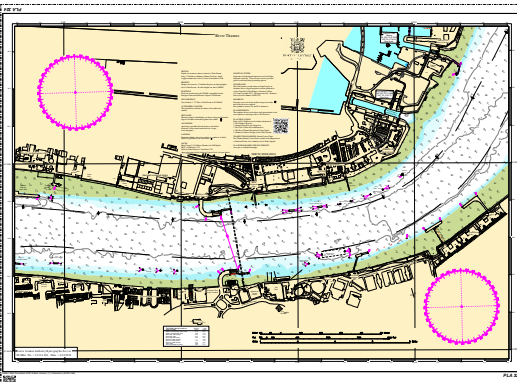
PLA 322



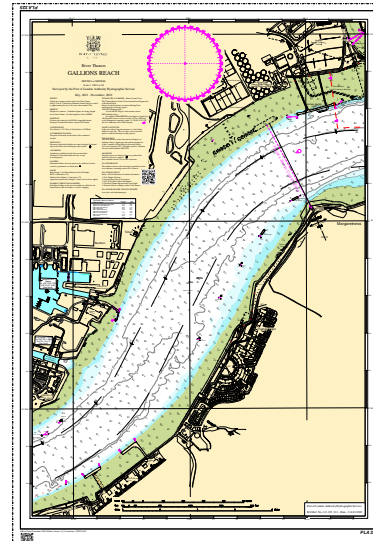
PLA 323



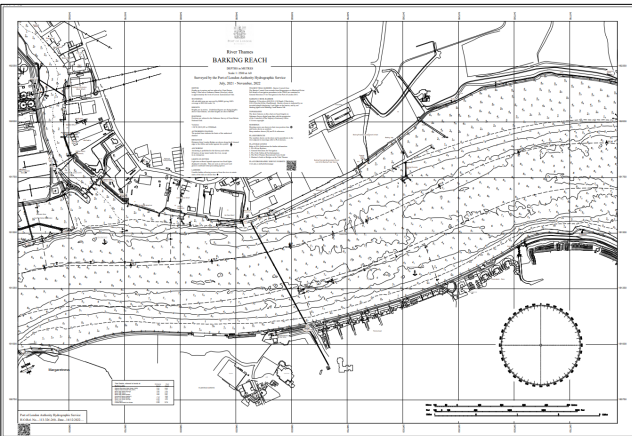
PLA 324



PLA 325



PLA 326



For further information see the PLA hydrographic service website:

<http://www.pla.co.uk/Safety/PLA-Hydrographic-Service-Published-Surveys>