



PORT OF LONDON  
AUTHORITY

# Port of London Authority Chart Correction Advice Date: 11th April, 2023

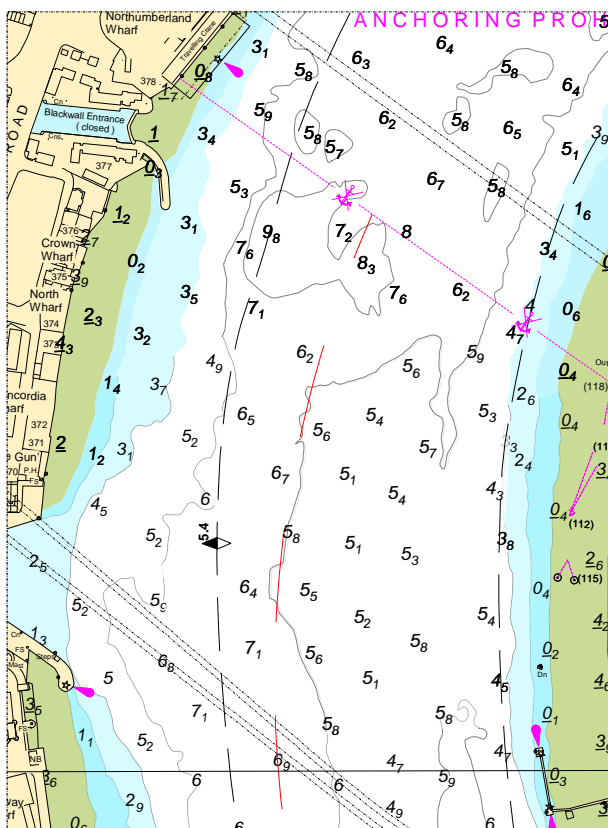
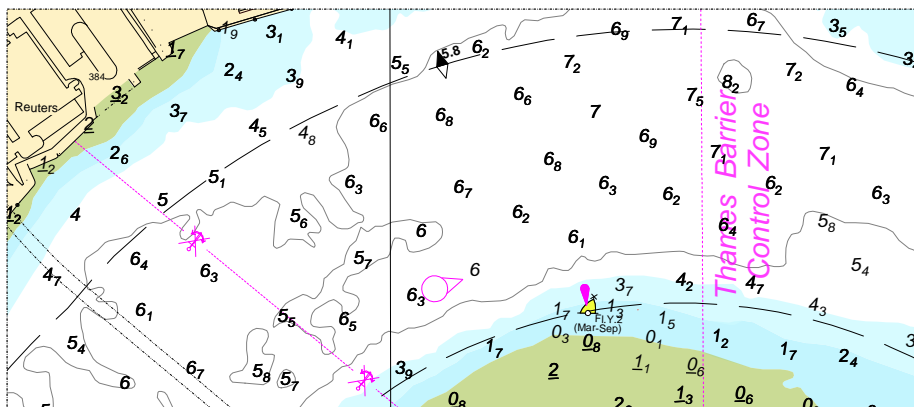


## CCA No: 2023/9

Chart: Blackwall Reach to Bugsby's Reach

PLA Chart No. 322  
HO Ref No. 113-322-360  
Previous Chart Correction: 2023/1

The accompanying block correction shows:  
Revised Depths & Contours in the vicinity of Blackwall Point and  
between Delta Wharf & South West India Dock



For further information see the PLA hydrographic service website:

<http://www.pla.co.uk/Safety/PLA-Hydrographic-Service-Published-Surveys>

AUTHOR: John Dillon-Leetch, Port Hydrographer

Reviewed by: RH

Document ID: FM 0425

OWNER: John Dillon-Leetch, Port Hydrographer

Reviewed Date: 21/12/2022

Review Due: Dec 2023