



PORT OF LONDON
AUTHORITY

Port of London Authority
Chart Correction Advice
Date: 14th April, 2023



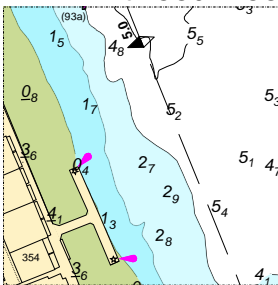
CCA No: 2023/8

Chart: Greenwich Reach to Blackwall Reach

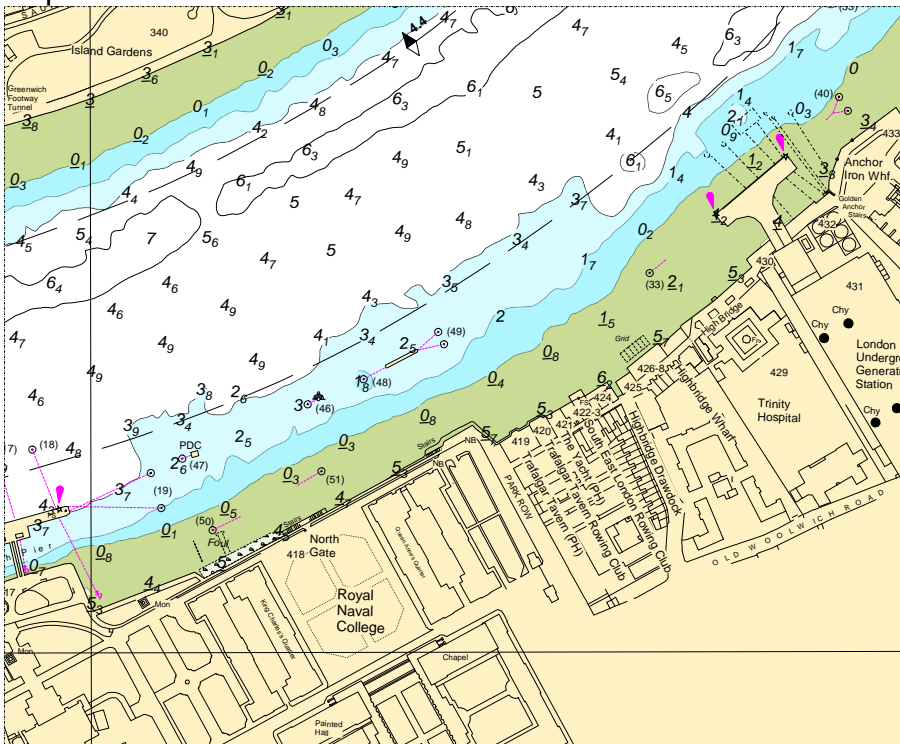
PLA Chart No. 321
HO Ref No. 113-321-190
Previous Chart Correction: 2022/9

The accompanying block corrections show
Removal of all PLA Driftwood Moorings off Millwall Wharf
And Revised Channel Depths & Contours between 4.2MM & 4.5MM

PLA Driftwood Moorings



Depths & Contours



For further information see the PLA hydrographic service website:

<http://www.pla.co.uk/Safety/PLA-Hydrographic-Service-Published-Surveys>

AUTHOR: John Dillon-Leetch, Port Hydrographer

Reviewed by: RH

Document ID: FM 0425

OWNER: John Dillon-Leetch, Port Hydrographer

Reviewed Date: 21/12/2022

Review Due: Dec 2023