



PORT OF LONDON  
AUTHORITY

Port of London Authority  
Chart Correction Advice  
Date: 20th November, 2023



**CCA No: 2023/33**

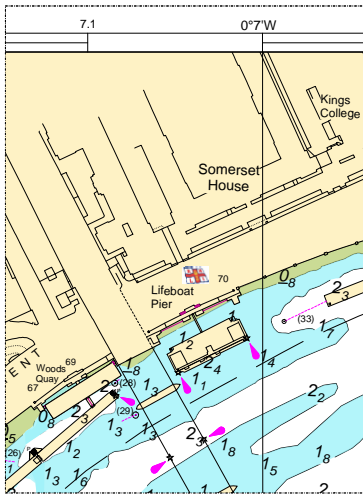
Chart:  
Lambeth Reach & Kings Reach

PLA Chart No. 316  
HO Ref No. 113-316-018  
Previous Chart Correction: 2023/32c

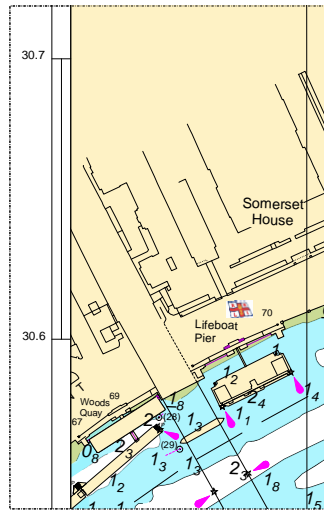
The accompanying block correction shows  
New Navigation Lights on the RNLI Pier, Embankment

PLA Chart No. 317  
HO Ref No. 113-317-130  
Previous Chart Correction: 2023/32c

PLA 316



PLA 317



For further information see the PLA hydrographic service website:

<http://www.pla.co.uk/Safety/PLA-Hydrographic-Service-Published-Surveys>