



PORT OF LONDON
AUTHORITY

Port of London Authority
Chart Correction Advice
Date: 18th October, 2023



CCA No: 2023/29

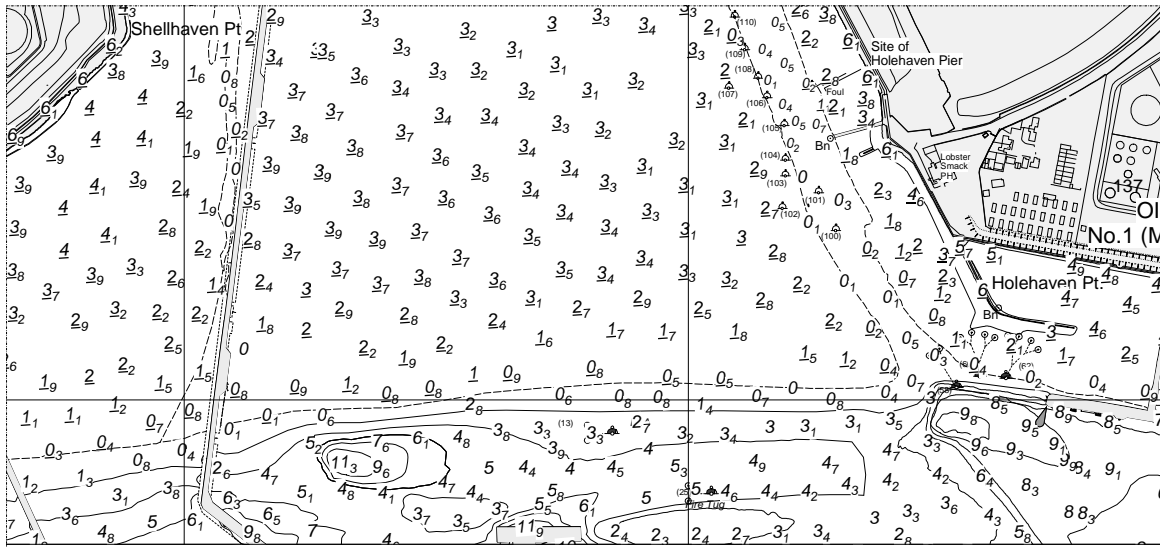
Chart: Sea Reach Thameshaven to Canvey Island
& Canvey West

PLA Chart No. 341
HO Ref No. 113-341-680
Previous Chart Correction: 2022/11

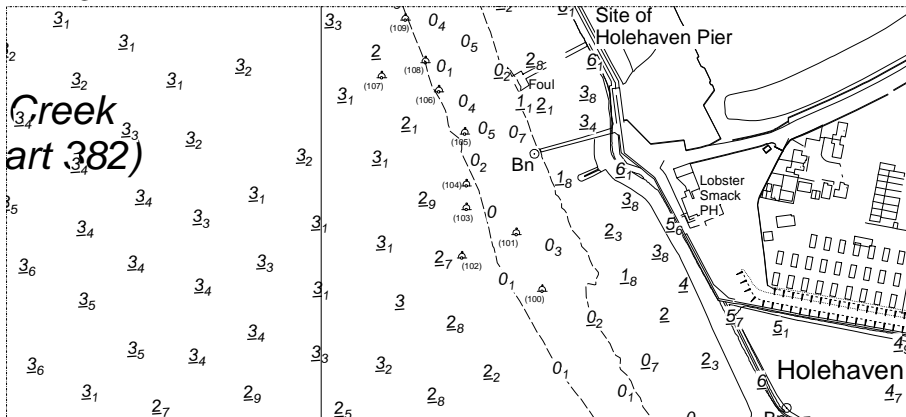
The accompanying block correction shows:
Removal of Holehaven Pier and revised Depths
& Contours in the approaches to Holehaven Creek

PLA Chart No. 382
HO Ref No. 113-382-010
Previous Chart Correction: NE 2015

PLA 382



PLA 341



For further information see the PLA hydrographic service website:

<http://www.pla.co.uk/Safety/PLA-Hydrographic-Service-Published-Surveys>