



PORT OF LONDON
AUTHORITY

Port of London Authority
Chart Correction Advice
Date: .10th October, 2023

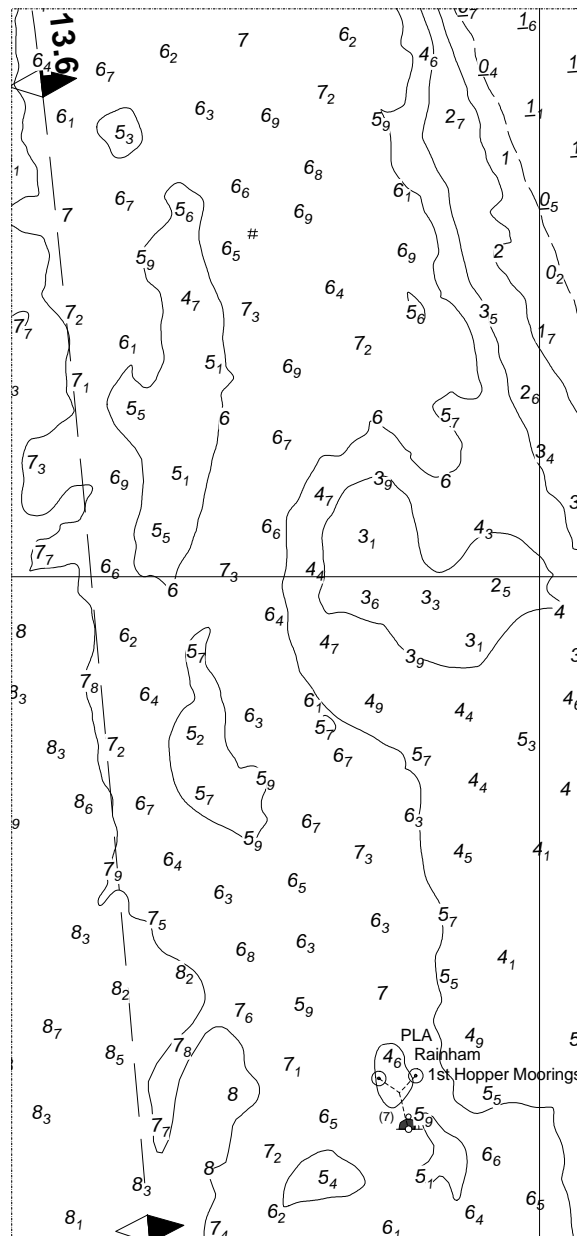


CCA No: 2023/28

Chart: Erith Reach

PLA Chart No. 329
HO Ref No. 113-329-149
Previous Chart Correction: 2023/3

The accompanying block correction shows:
Relocation of PLA Rainham 1st Hopper Mooring



For further information see the PLA hydrographic service website:

<http://www.pla.co.uk/Safety/PLA-Hydrographic-Service-Published-Surveys>

AUTHOR: John Dillon-Leetch, Port Hydrographer

Reviewed by: RH

Document ID: FM 0425

OWNER: John Dillon-Leetch, Port Hydrographer

Reviewed Date: 21/12/2022

Review Due: Dec 2023