



PORT OF LONDON
AUTHORITY

Port of London Authority Chart Correction Advice Date: 10th October, 2023



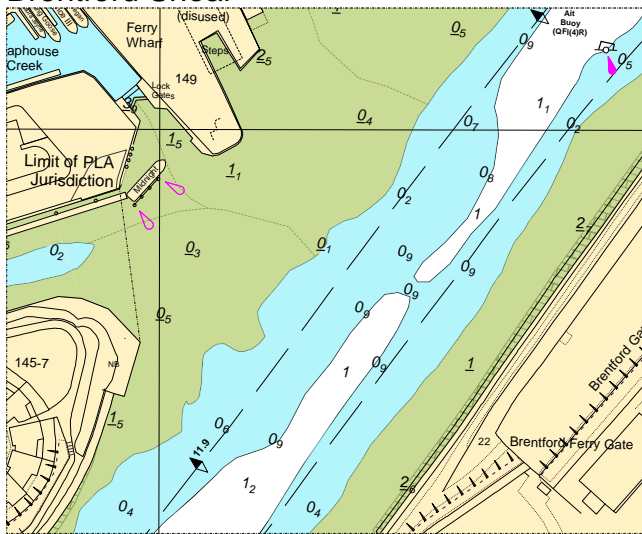
CCA No: 2023/27

Chart: Brentford Quay to Kew Bridge

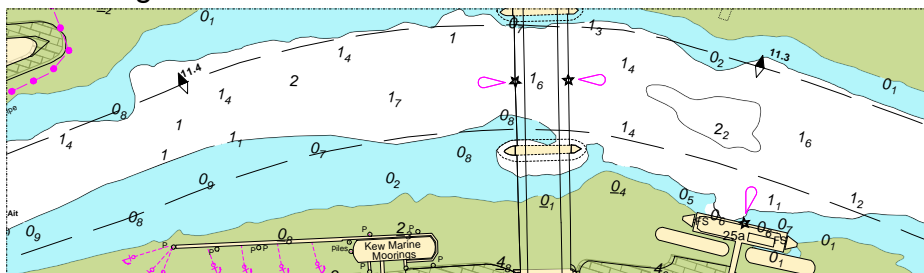
PLA Chart No. 306
HO Ref No. 113-306-012
Previous Chart Correction: 2019/14

The accompanying block correction shows:
Revised depths and contours over Brentford Shoal and in the vicinity of Kew Bridge

Brentford Shoal



Kew Bridge



For further information see the PLA hydrographic service website:

<http://www.pla.co.uk/Safety/PLA-Hydrographic-Service-Published-Surveys>