



PORT OF LONDON
AUTHORITY

Port of London Authority Chart Correction Advice Date: 10th October, 2023



CCA No: 2023/26

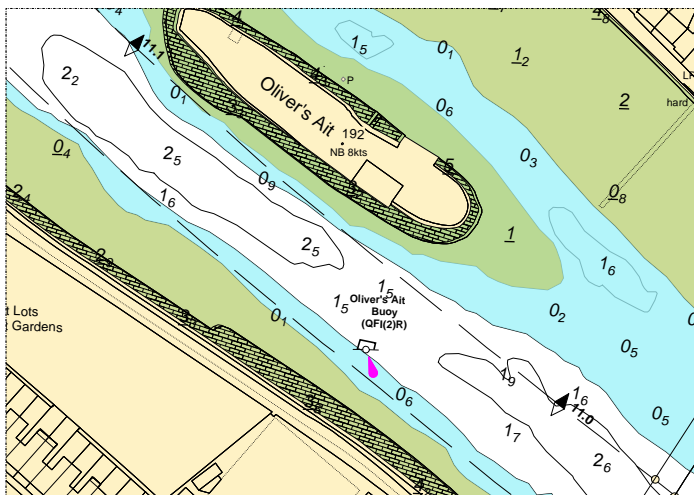
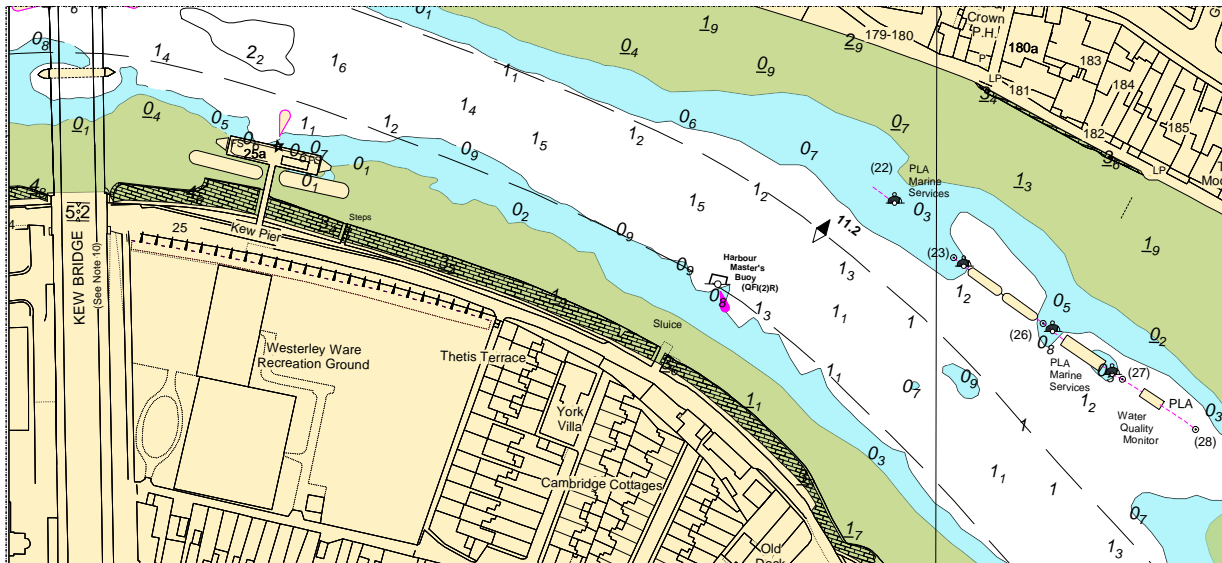
Chart: Kew Bridge to Kingston Creek

PLA Chart No. 307

HO Ref No. 113-307-080

Previous Chart Correction: 2022/9

The accompanying block correction shows
Revised depths and contours in the vicinity of Kew Bridge, Kew Shoal & Oliver's Ait



For further information see the
PLA hydrographic service website:

<http://www.pla.co.uk/Safety/PLA-Hydrographic-Service-Published-Surveys>

AUTHOR: John Dillon-Leetch, Port Hydrographer

Reviewed by: RH

Document ID: FM 0425

OWNER: John Dillon-Leetch, Port Hydrographer

Reviewed Date: 21/12/2022

Review Due: Dec 2023