



PORT OF LONDON
AUTHORITY

Port of London Authority
Chart Correction Advice
Date: 29th September, 2023



CCA No: 2023/24

Chart: Wandsworth Reach to Battersea Reach
& Upper Pool

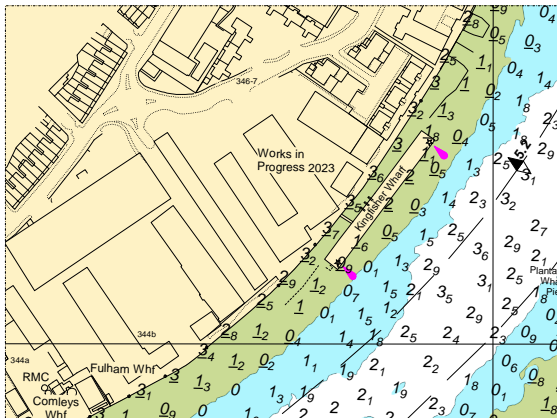
PLA Chart No. 313
HO Ref No. 113-313-040
Previous Chart Correction: 2023/21

PLA Chart No. 318
HO Ref No. 113-318-226
Previous Chart Correction: 2023/19

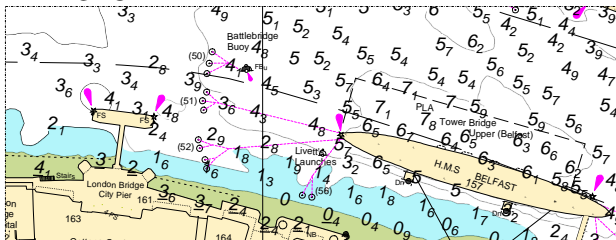
Chart Correction required for:
PLA chart 313,
Change of jetty name north shore
"Sainsbury's Jetty" to "Kingfisher Wharf"
Revised shore topography detail

PLA Chart 318.
Change of light characteristics during trials Battlebridge Buoy

PLA 313



PLA 318



For further information see the PLA hydrographic service website:

<http://www.pla.co.uk/Safety/PLA-Hydrographic-Service-Published-Surveys>