



PORT OF LONDON
AUTHORITY

Port of London Authority Chart Correction Advice Date: 27th September, 2023



CCA No: 2023/23

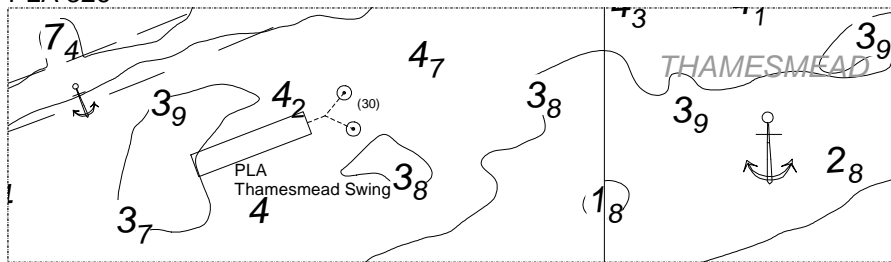
Charts: Barking Reach, Halfway Reach
& Gravesend Reach (Lower)

PLA Chart No. 326
HO Ref No. 113-326-260
Previous Chart Correction: 2022 (NE)

The accompanying block correction shows:
Revised moorings in the vicinity of Thamesmead,
Middleton Jetty / Southern Outfall
& Lower Gravesend Reach

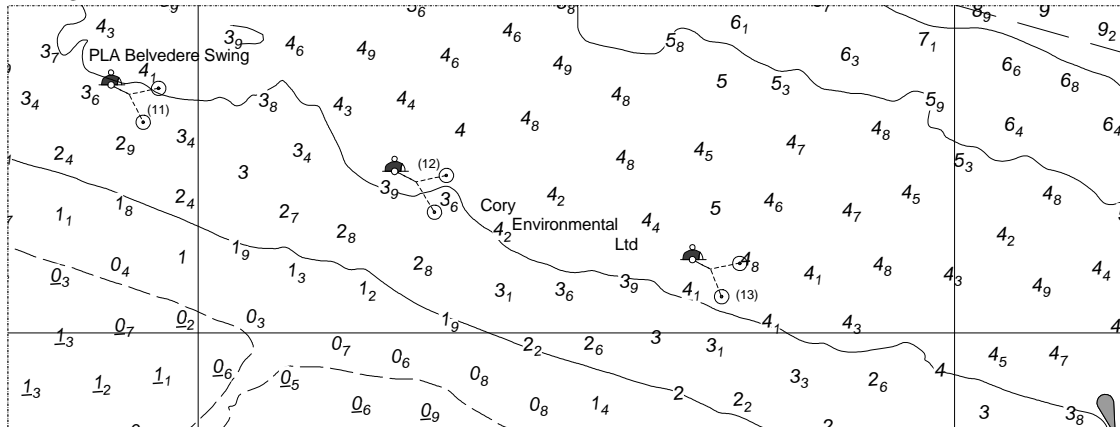
PLA Chart No. 327
HO Ref No. 113-327-190
Previous Chart Correction: 2022/11

PLA 326



PLA Chart No. 337
HO Ref No. 113-337-141
Previous Chart Correction: 2022/11

PLA 327



PLA 337

