



PORT OF LONDON  
AUTHORITY

Port of London Authority  
Chart Correction Advice  
Date: 26th September, 2023



**CCA No: 2023/22**

Chart: Greenwich Reach  
Woolwich Reach

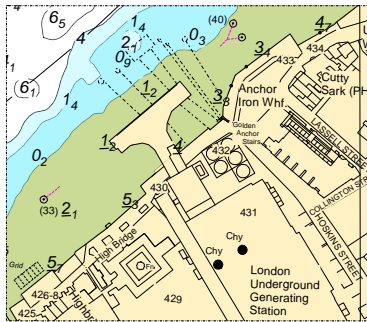
PLA Chart No. 321  
HO Ref No. 113-321-190  
Previous Chart Correction: 2023/20

PLA Chart No. 323  
HO Ref No. 113-323-387  
Previous Chart Correction: 2023/17

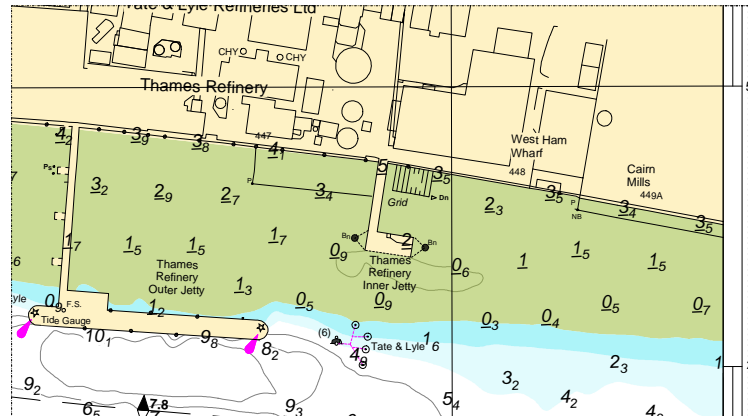
Removal of 2-fixed lights on PLA charts 321 323 & 324  
Chart 321 "Greenwich Power Station Pier"  
Chart 323 & 324 "Thames Refinery Inner"

PLA Chart No. 324  
HO Ref No. 113-324-108  
Previous Chart Correction: 2023/01(NE)

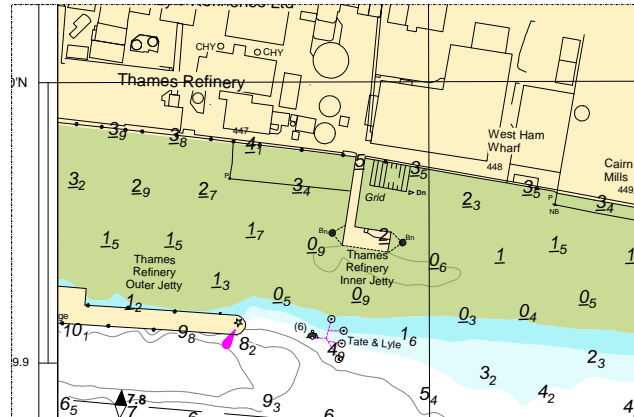
PLA 321



PLA 323



PLA 324



For further information see the PLA hydrographic service website:

<http://www.pla.co.uk/Safety/PLA-Hydrographic-Service-Published-Surveys>