



PORT OF LONDON
AUTHORITY

Port of London Authority
Chart Correction Advice
Date: 24th August, 2023



CCA No: 2023/21

Chart: Wandsworth Reach to Battersea Reach
& Battersea Reach to Chelsea Reach

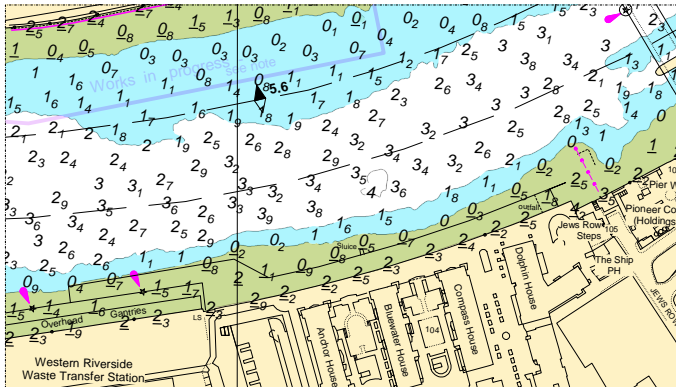
PLA Chart No. 313
HO Ref No. 113-313-040
Previous Chart Correction: 2023/7

PLA Chart No. 314
HO Ref No. 113-314-088
Previous Chart Correction: 2023/9

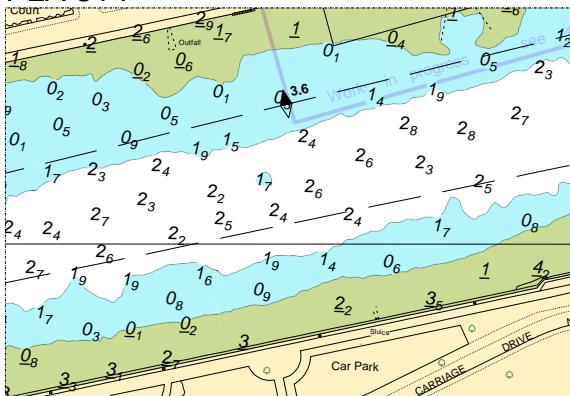
Removal of moorings on PLA charts 313, 314 & 315:
Chart 313 "TTT Hurlingham Moorings (32)"
Chart 314 & 315 "TTT Battersea Park (30)"

PLA Chart No. 315
HO Ref No. 113-315-050
Previous Chart Correction: 2023/14

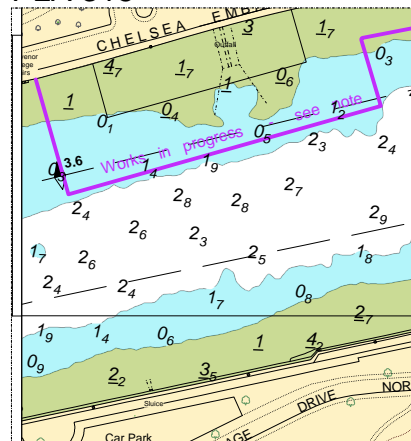
PLA 313



PLA 314



PLA 315



For further information see the PLA hydrographic service website:

<http://www.pla.co.uk/Safety/PLA-Hydrographic-Service-Published-Surveys>