



PORT OF LONDON
AUTHORITY

Port of London Authority Chart Correction Advice Date: 27th July. 2023



CCA No: 2023/19

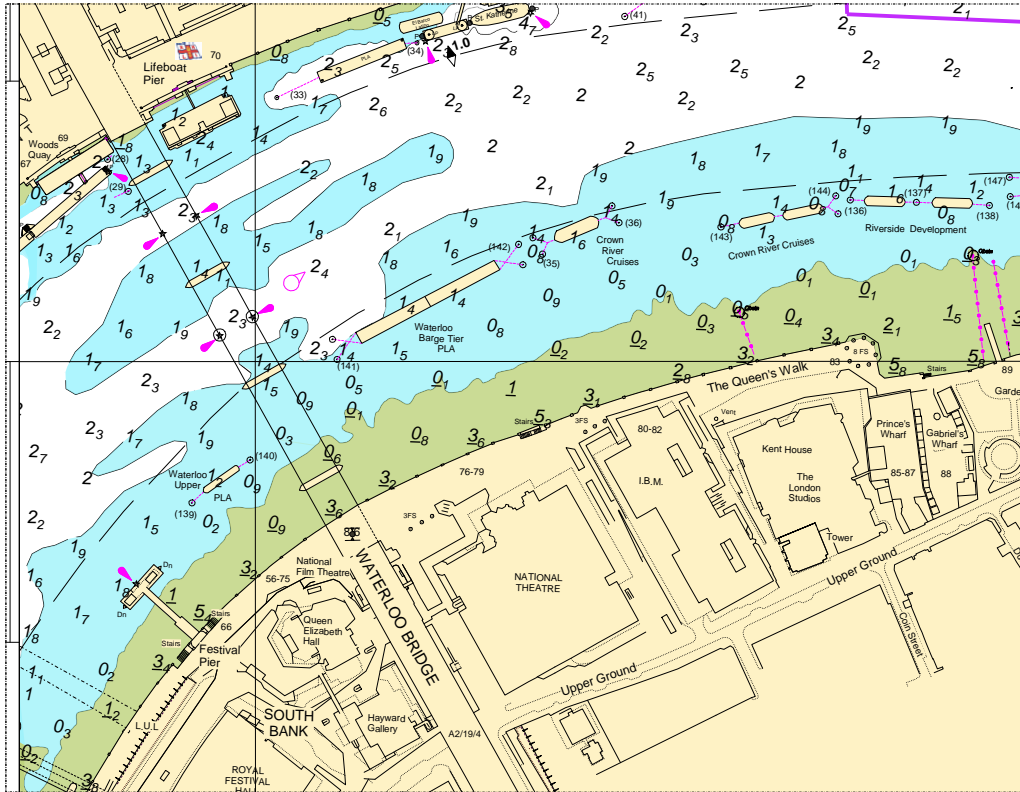
Chart: Kings Reach

The accompanying block correction shows:
New RNLI Pier and Revised Depths & contours
in the vicinity of Waterloo Bridge and between
Southwalk Bridge & London Bridge

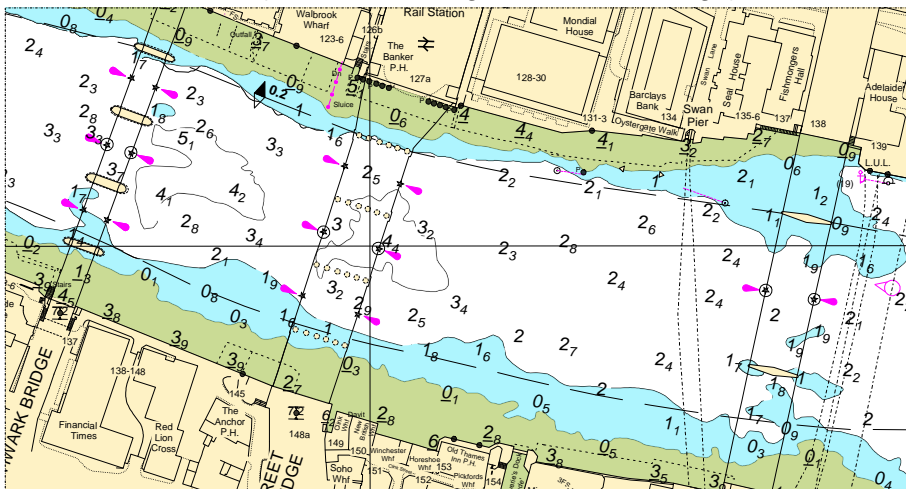
PLA Chart No. 317
HO Ref No. 113-317-130
Previous Chart Correction: 2023/4

PLA Chart No. 318
HO Ref No. 113-318-266
Previous Chart Correction: 2023/13

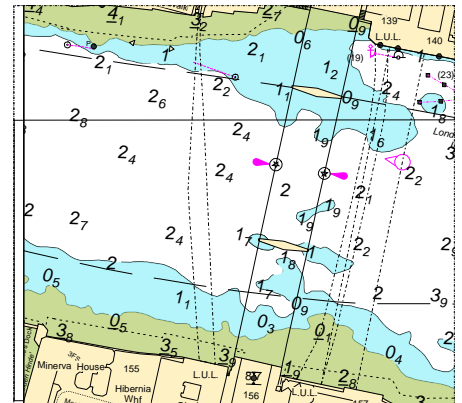
PLA 317 (Waterloo Bridge)



PLA 317 (Southwalk Bridge to London Bridge)



PLA 318



For further information see the PLA hydrographic service website:

<http://www.pla.co.uk/Safety/PLA-Hydrographic-Service-Published-Surveys>

HYDROGRAPHIC SERVICE
ISO FORM 425

Issue:01 Date:18/10/13
Page 1 of 1