



PORT OF LONDON
AUTHORITY

Port of London Authority
Chart Correction Advice
Date: 25th July 2023



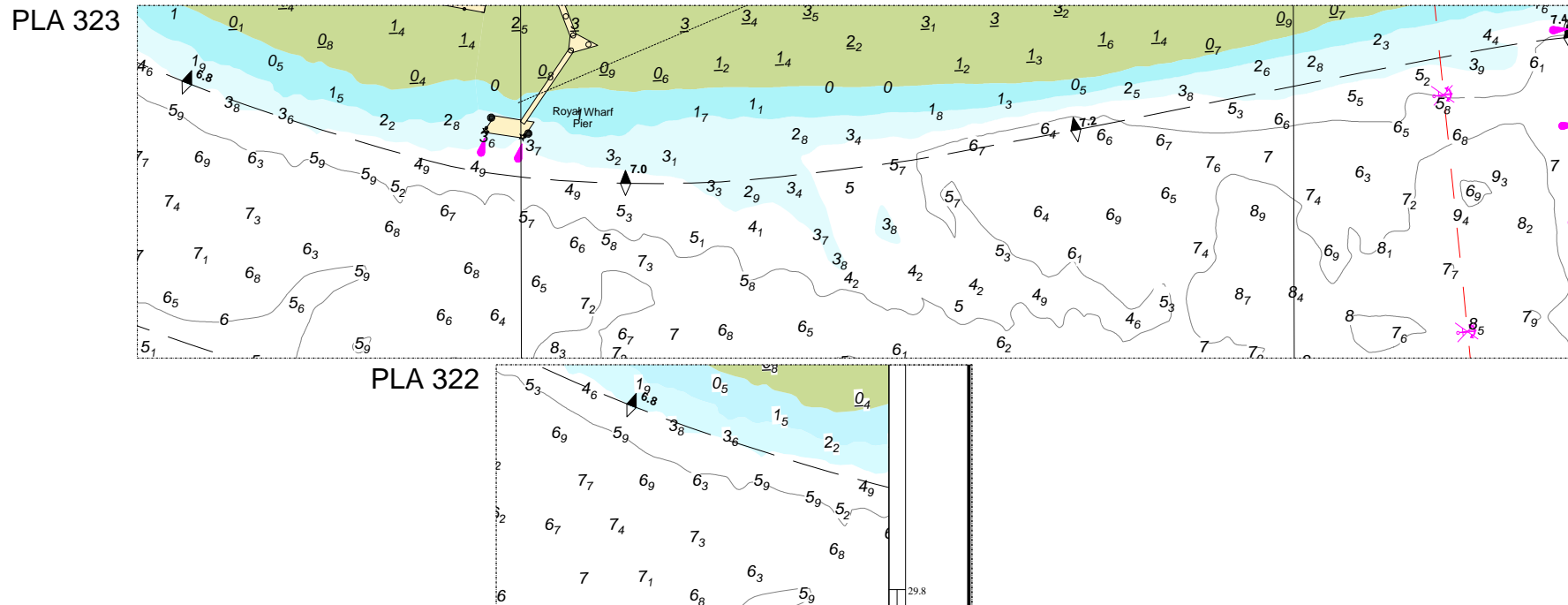
CCA No: 2023/17

Chart: Woolwich Reach Upper

PLA Chart No. 322
HO Ref No. 113-322-360
Previous Chart Correction: 2023/11

The accompanying block correction shows:
Revised depths & contours over Hookness Shoal

PLA Chart No. 323
HO Ref No. 113-323-387
Previous Chart Correction: 2023/5



For further information see the PLA hydrographic service website:

<http://www.pla.co.uk/Safety/PLA-Hydrographic-Service-Published-Surveys>

HYDROGRAPHIC SERVICE
ISO FORM 425

Issue:01 Date:18/10/13
Page 1 of 1

AUTHOR: John Dillon-Leetch, Port Hydrographer

Reviewed by: RH

Document ID: FM 0425

OWNER: John Dillon-Leetch, Port Hydrographer

Reviewed Date: 21/12/2022

Review Due: Dec 2023