



PORT OF LONDON  
AUTHORITY

Port of London Authority  
Chart Correction Advice  
Date: 25th July 2023



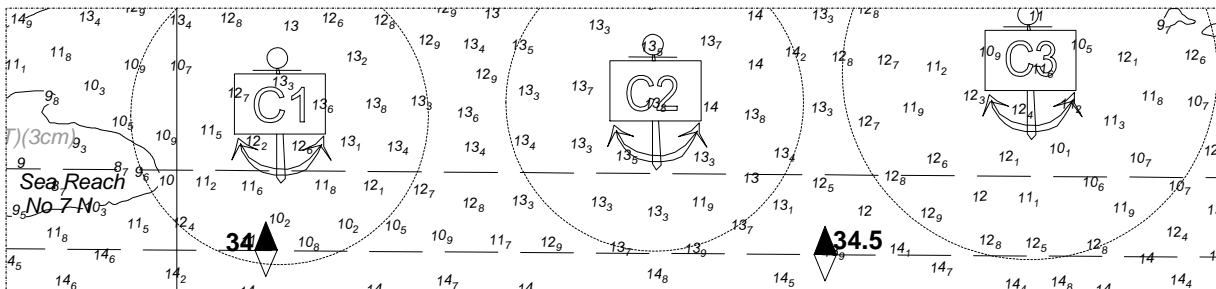
**CCA No: 2023/16**

Chart: Sea Reach- Canvey Island & Southend-on-Sea

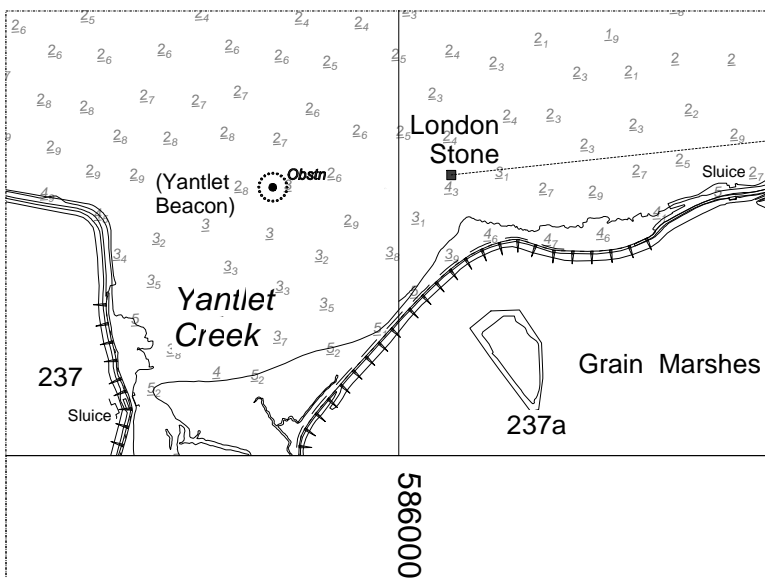
PLA Chart No. 342  
HO Ref No. 113-342-110  
Previous Chart Correction: 2023/6

The accompanying block correction shows:  
Revised Depths in the Chapman Anchorages,  
Change of symbol from a beacon to an obstruction due to  
it no longer being visible at all states of tide and  
Revised Depths & Contours in the Southend Small Ship Anchorage

**Chapman Anchorages**



**Yantlet Beacon**



For further information see the PLA hydrographic service website:

<http://www.pla.co.uk/Safety/PLA-Hydrographic-Service-Published-Surveys>

# Southend Small Ship Anchorage

