



PORT OF LONDON  
AUTHORITY

Port of London Authority  
Chart Correction Advice  
8th August, 2023

**CCA No: 2023/15**



Charts: Long Reach (Lower), St Clements Reach  
& Northfleet Hope

PLA Chart No. 332  
HO Ref No. 113-332-226  
Previous Chart Correction: 2021/7

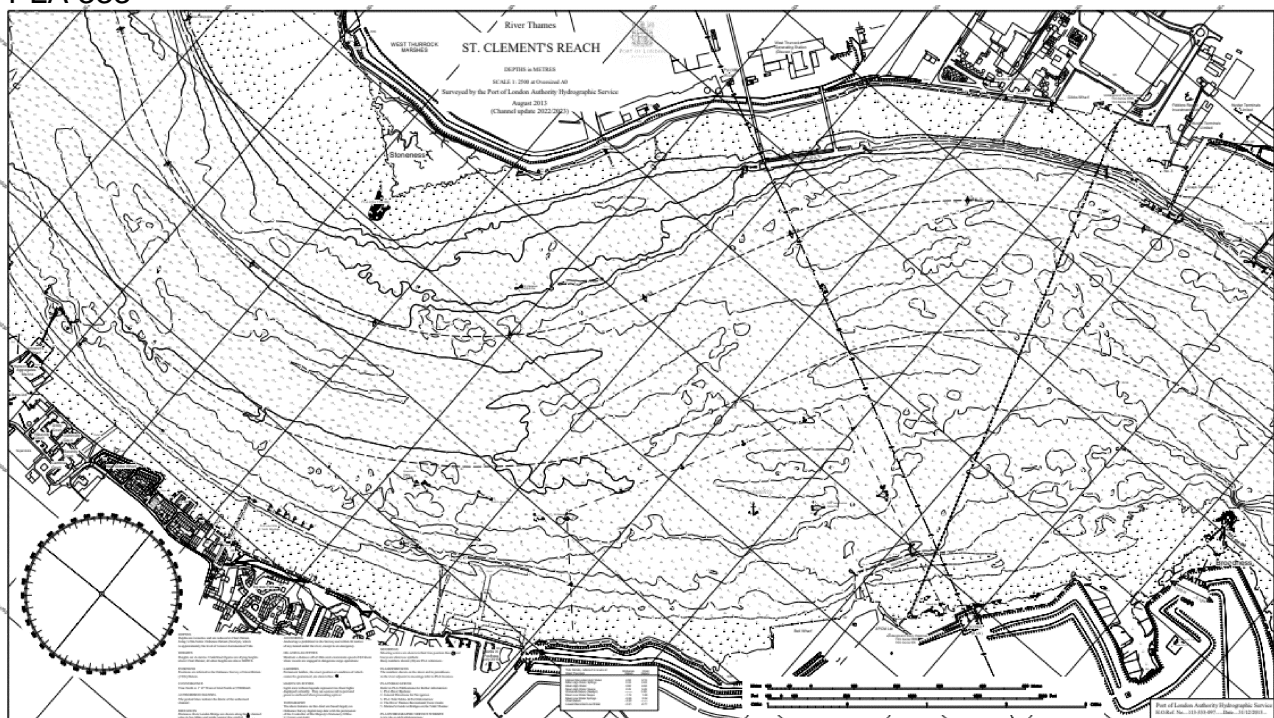
PLA Chart No. 333  
HO Ref No. 113-333-097  
Previous Chart Correction: 2022/11

PLA Chart No. 334  
HO Ref No. 113-334-284  
Previous Chart Correction: 2022/11

There is a New Version of 2013 Edition PLA Chart 333 for:  
Revised Depths and contours in the channel

The accompanying block corrections on page 2 show:  
Revised Depths & Contours in PLA Charts 332 & 334, Long Reach & Norfleet Hope

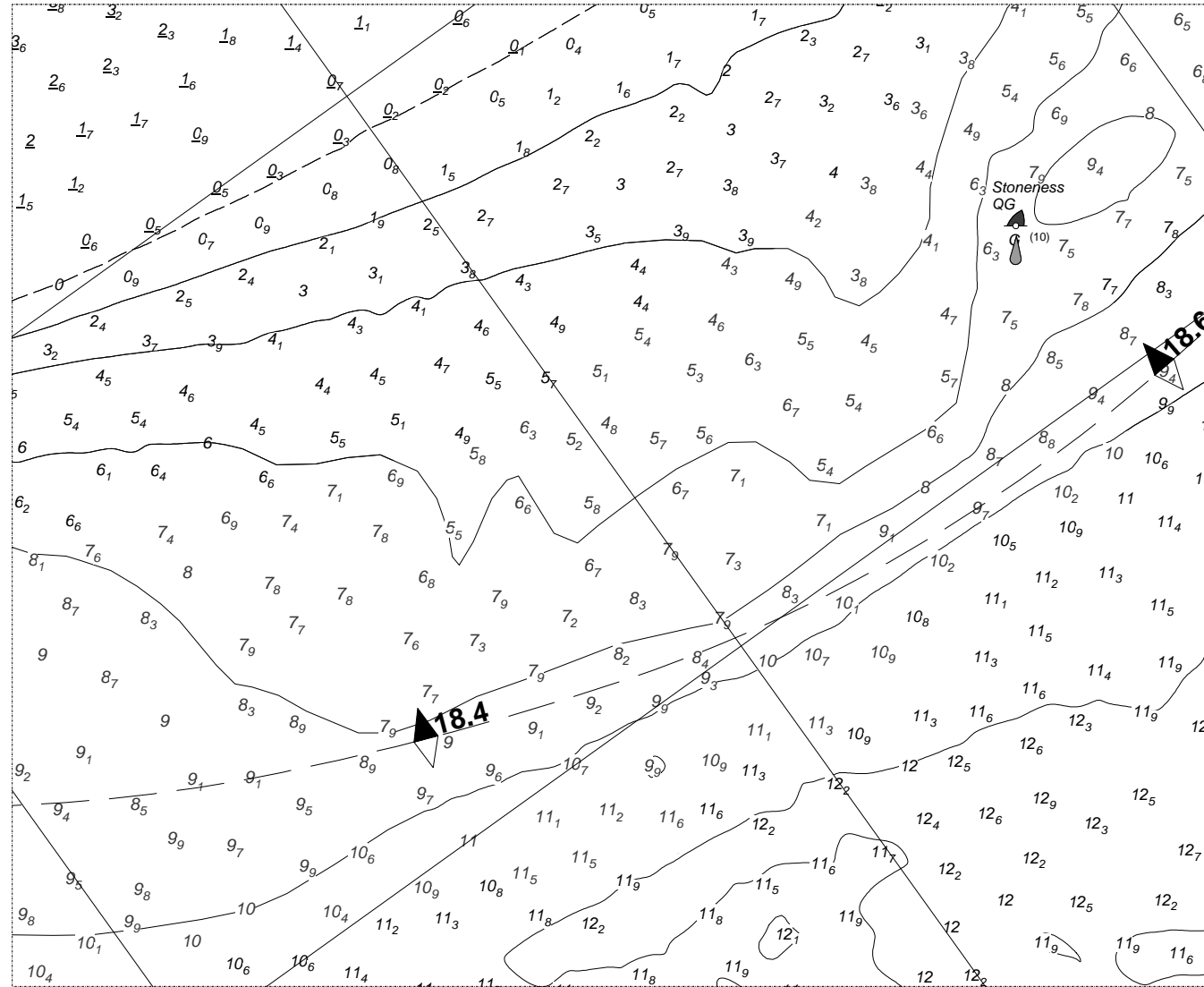
**PLA 333**



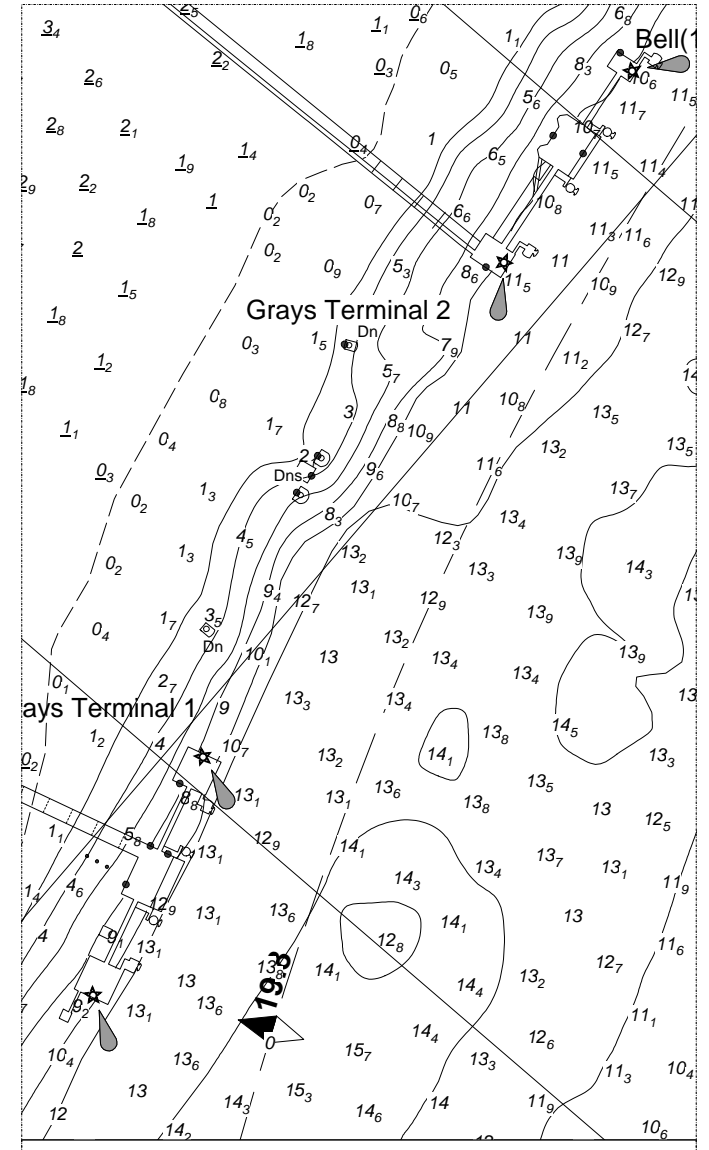
For further information see the PLA hydrographic service website:

<http://www.pla.co.uk/Safety/PLA-Hydrographic-Service-Published-Surveys>

PLA 332



PLA 334



For further information see the PLA hydrographic service website:

<http://www.pla.co.uk/Safety/PLA-Hydrographic-Service-Published-Surveys>