



PORT OF LONDON  
AUTHORITY

Port of London Authority  
Chart Correction Advice  
Date: 23rd May, 2023



**CCA No: 2023/13**

Chart: Upper Pool to Greenwich Reach

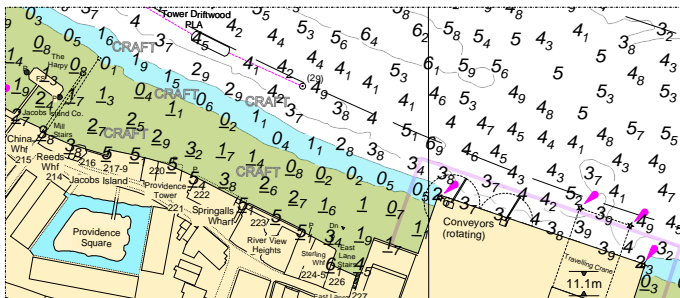
PLA Chart No. 318  
HO Ref No. 113-318-266  
Previous Chart Correction: 2022/09

The accompanying block correction shows:  
Additional craft and revised Depths & Contours

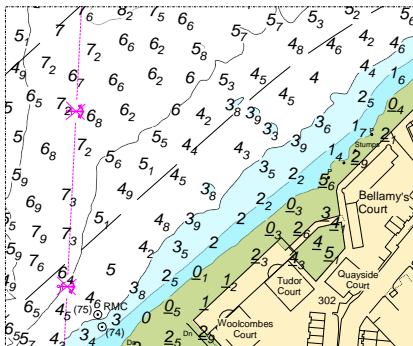
PLA Chart No. 319  
HO Ref No. 113-319-130  
Previous Chart Correction: 2022/09

PLA Chart No. 320  
HO Ref No. 113-320-029  
Previous Chart Correction: 2022/15

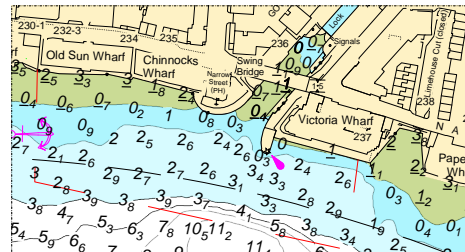
**PLA 318 CRAFT & Chambers Wharf**



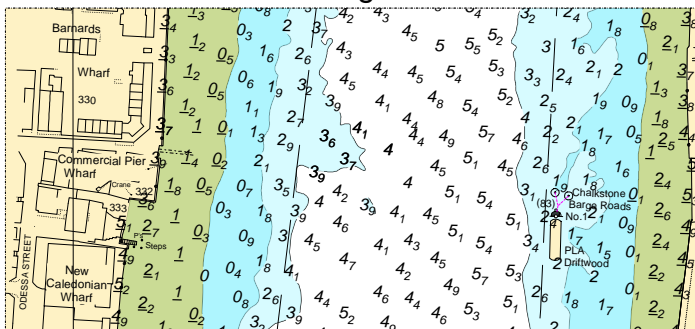
**PLA 319 1.7MM Channel**



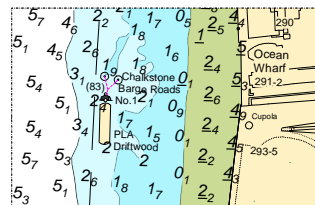
**PLA 319 Limehouse Marina**



**PLA 319 Chalkstone Barge Roads**



**PLA 320 Chalkstone**



For further information see the PLA hydrographic service website:

<http://www.pla.co.uk/Safety/PLA-Hydrographic-Service-Published-Surveys>