



PORT OF LONDON
AUTHORITY

Port of London Authority Chart Correction Advice Date:30th September, 2022

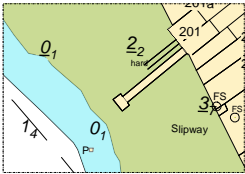


CCA No: 2022/9a

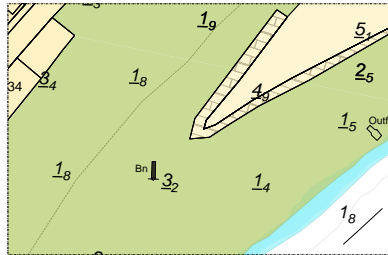
Charts: Kew Bridge to London Bridge

The accompanying block corrections show:
Miscellaneous changes to Lights and other Aids to Navigation
& Topography

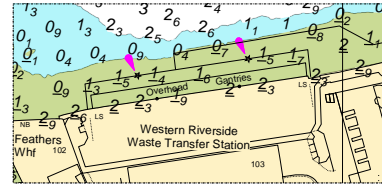
PLA 307 Grove Park Road



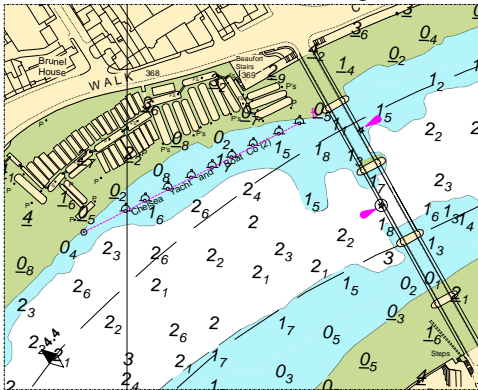
PLA 310 Chiswick Ait Upper



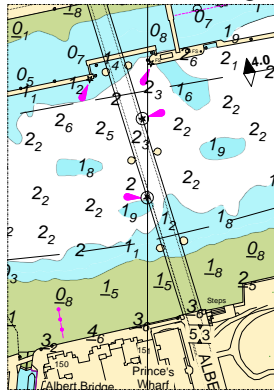
PLA 313 Western Riverside



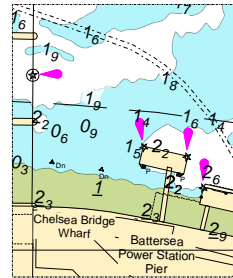
PLA 314 Battersea Road Bridge



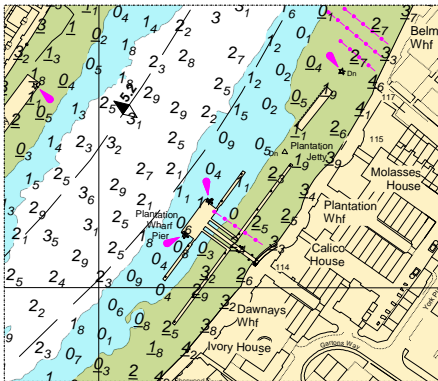
PLA 314 Albert Bridge



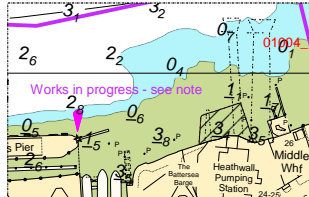
PLA 315 Battersea Power Station Pier



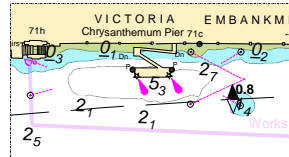
PLA 313 Plantation Wharf



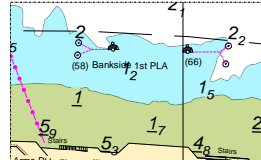
PLA 315 Middle Wharf



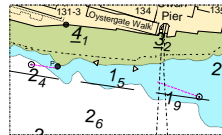
PLA 317 Chrysanthemum Pier



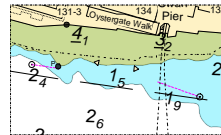
PLA 317 Bankside 1st Mooring



PLA 318 Swan Pier



PLA 317 Swan Pier



For further information see the PLA hydrographic service website:

<http://www.pla.co.uk/Safety/PLA-Hydrographic-Service-Published-Surveys>