



PORT OF LONDON  
AUTHORITY

Port of London Authority  
Chart Correction Advice  
Date: 16/05/2022



**CCA No: 2022/6**

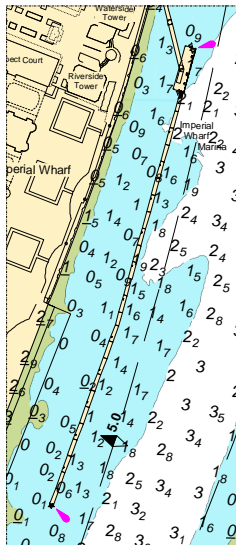
Chart: Battersea Reach

PLA Chart No. 313  
HO Ref No. 113-313-040  
Previous Chart Correction: 2019/29

PLA Chart No. 314  
HO Ref No. 113-314-088  
Previous Chart Correction: 2019/11

The accompanying block correction shows:  
Revised Depths & Contours Imperial Wharf Marina, Chelsea

PLA 313



PLA 314



For further information see the PLA hydrographic service website:

<http://www.pla.co.uk/Safety/PLA-Hydrographic-Service-Published-Surveys>