



PORT OF LONDON
AUTHORITY

Port of London Authority
Chart Correction Advice
Date: 3rd March, 2022



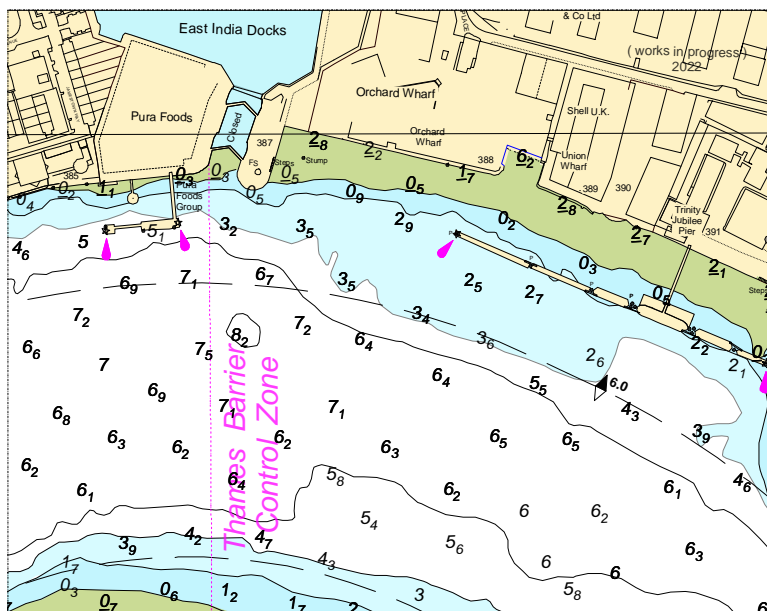
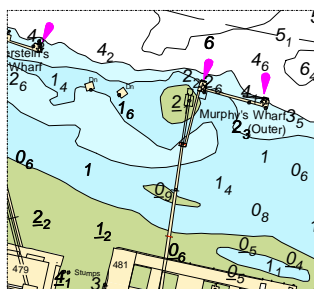
CCA No: 2022/2

Charts: Blackwall Reach & Woolwich Reach Upper

PLA Chart No. 322
HO Ref No. 113-322-360
Previous Chart Correction: 2021/23

PLA Chart No. 323
HO Ref No. 113-323-301
Previous Chart Correction: 2021/13

The accompanying block correction shows:
Revised Depths & Contours in the vicinity of Murphy's Wharves and
Topography & Depths around Trinity Jubilee Pier & Blackwall Point (PLA 322)
Chart PLA 323 has a new Version(4) for revised soundings in the vicinity of Murphy's Wharves,
Barrier Gardens Pier, Tate & Lyle (Outer) and Hookness & Warspite shoals



For further information see the PLA hydrographic service website:

<http://www.pla.co.uk/Safety/PLA-Hydrographic-Service-Published-Surveys>