



PORT OF LONDON
AUTHORITY

Port of London Authority
Chart Correction Advice
Date: 28th November, 2022

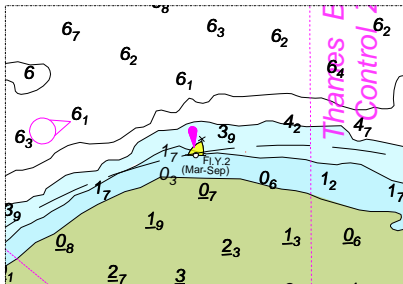


CCA No: 2022/12

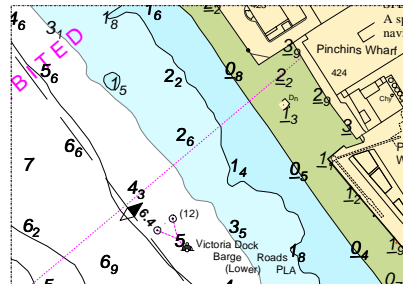
Chart: Blackwall Reach to Bugsby's Reach

PLA Chart No. 322
HO Ref No. 113-322-360
Previous Chart Correction: 2022/10

The accompanying block correction shows:
Seasonal Special Mark buoy at Blackwall Point and
Victoria Dock Barge Roads (Lower) moved approx 100m downstream



51.506N 000.002E



51.501N 000.014E

For further information see the PLA hydrographic service website:

<http://www.pla.co.uk/Safety/PLA-Hydrographic-Service-Published-Surveys>