



PORT OF LONDON  
AUTHORITY

# Port of London Authority Chart Correction Advice Date: 30th October, 2022

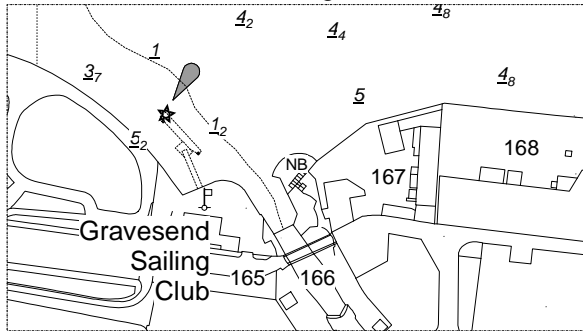


## CCA No: 2022/11c

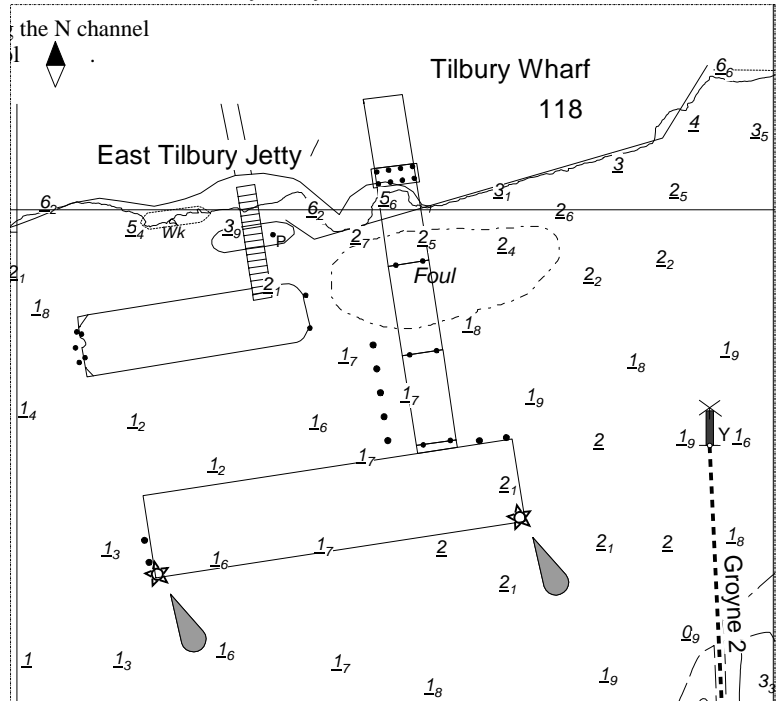
Charts: Gravesend Reach to Coryton

The accompanying block corrections show:  
Miscellaneous changes to Lights and other Aids to Navigation  
& Topography

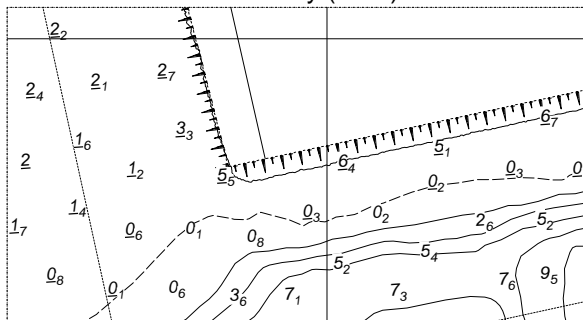
PLA 336 Gravesend Sailing Club



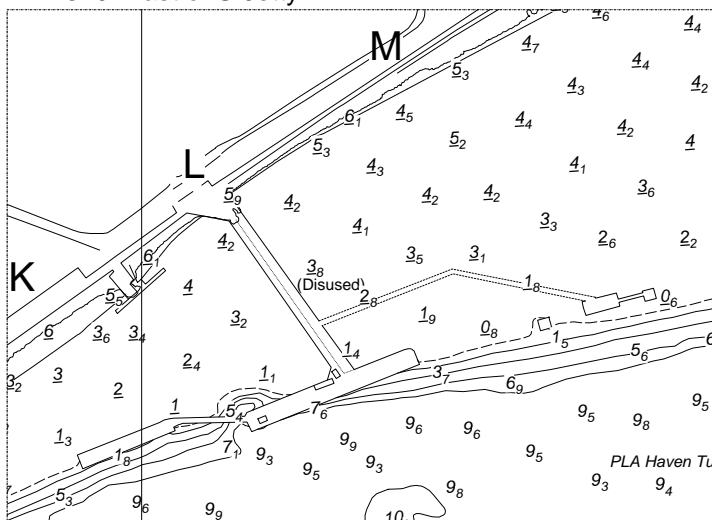
PLA 337 East Tilbury Jetty



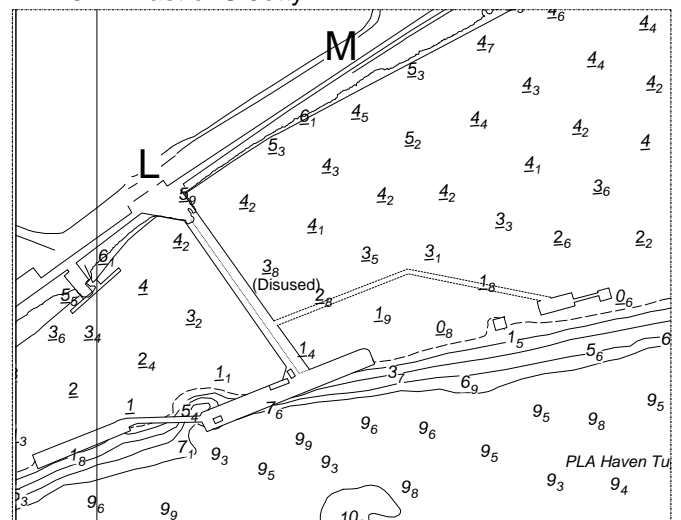
PLA 340 London Gateway (west)



PLA 340 East of S-Jetty



PLA 341 East of S-Jetty



For further information see the PLA hydrographic service website:

<http://www.pla.co.uk/Safety/PLA-Hydrographic-Service-Published-Surveys>