



PORT OF LONDON
AUTHORITY

Port of London Authority Chart Correction Advice Date:30th October, 2022

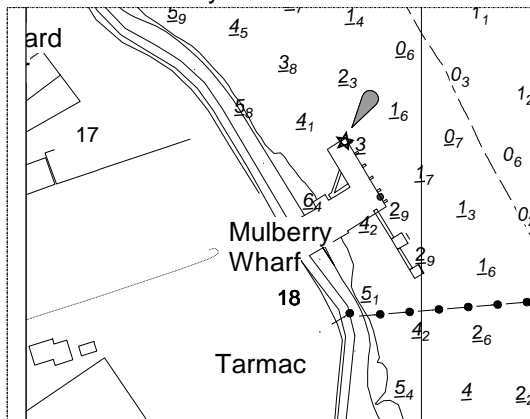


CCA No: 2022/11b

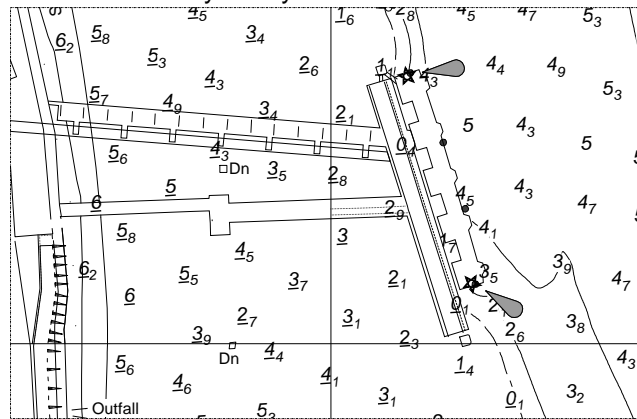
Charts: Erith Reach to St Clements Reach

The accompanying block corrections show:
Miscellaneous changes to Lights and other Aids to Navigation
& Topography

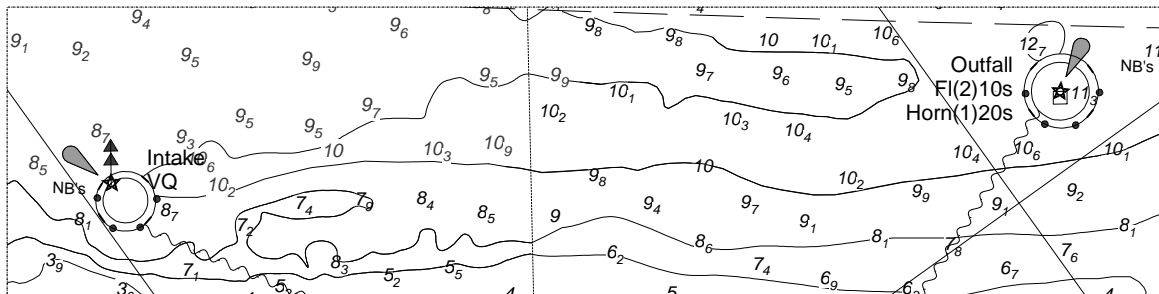
PLA 329 Mulberry Wharf



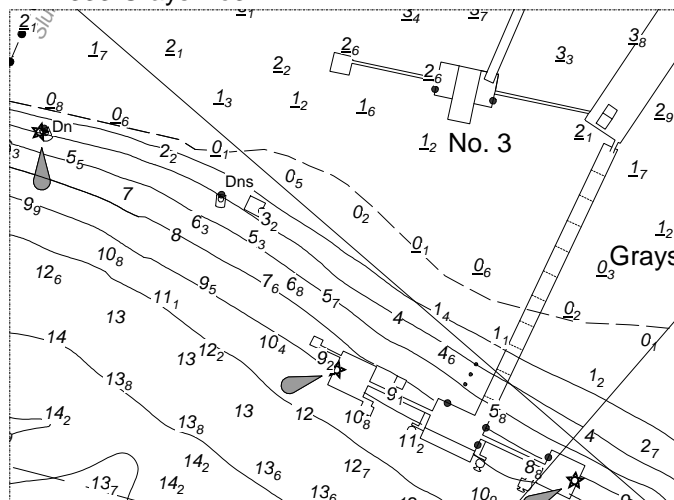
PLA 329 Conways Jetty



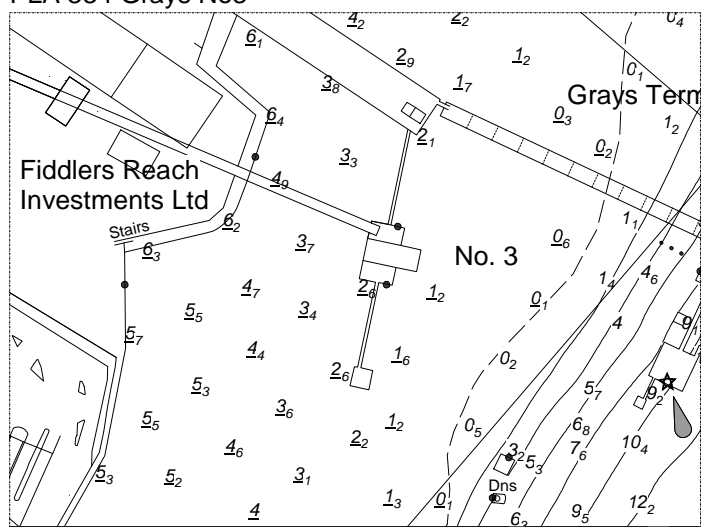
PLA 331 Littlebrook Power Station Intake/Outfall



PLA 333 Grays No3



PLA 334 Grays No3



For further information see the PLA hydrographic service website:

<http://www.pla.co.uk/Safety/PLA-Hydrographic-Service-Published-Surveys>