



PORT OF LONDON
AUTHORITY

Port of London Authority
Chart Correction Advice
Date: 25/08/2021



CCA No: 2021/25

Chart: Lambeth Reach

PLA Chart No. 316
HO Ref No. 113-316-178
Previous Chart Correction: 2020/16

The accompanying block correction shows:
Additional notes regarding the Exclusion Zone off the Houses of Parliament &
Reporting Vessels - Reporting Points at Lambeth Bridge & Waterloo Bridge
and Revised Depths & Contours around Lambeth Fire Pier

Additional notes
Exclusion Zone - Houses of Parliament &
Reporting Vessels - Reporting Points

Reporting Vessels - Reporting Point
Waterloo Bridge

Reporting Vessels - Reporting Point
Lambeth Bridge
Revised Depths Lambeth Fire Pier

LADDERS
Permanent ladders, the exact position or condition of which cannot be guaranteed, are shown thus ● .

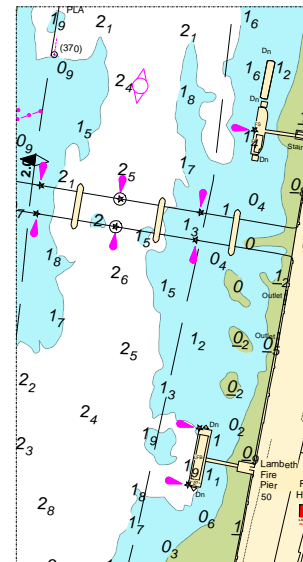
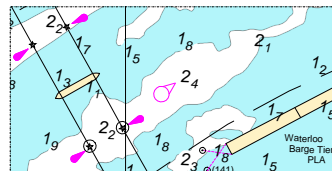
RESTRICTED AREA - LAMBETH REACH
51°29'.72N 0°07'.37W Lambeth Bridge Reporting Point In/Out
51°30'.53N 0°06'.98W Waterloo Bridge Reporting Point Out
Reporting Vessels contact London VTS on VHF channel 14

EXCLUSION ZONE - HOUSES OF PARLIAMENT
A 70m Exclusion Zone exists off the Houses of Parliament. No vessel shall navigate within or enter the Exclusion Zone, except with the specific permission of the Harbourmaster

BRIDGES - Headway at the centre span above MHWS:
LAMBETH BRIDGE = 6.4m
WESTMINSTER BRIDGE = 5.4m
CHARING CROSS RAILWAY BRIDGE = 7.0m
WATERLOO BRIDGE = 8.6m

NB. Submerged obstructions in Arches Nos.3, 4 and 5 at Westminster Bridge due to extended bridge piers. (See plan insert below)

Proceeding Downstream
Arch No.3 Arch No.4 Arch No.5
North South



For further information see the PLA hydrographic service website:

<http://www.pla.co.uk/Safety/PLA-Hydrographic-Service-Published-Surveys>