



PORT OF LONDON
AUTHORITY

Port of London Authority Chart Correction Advice

Date: 23/08/2021



CCA No: 2021/23

PLA Chart No. 322.

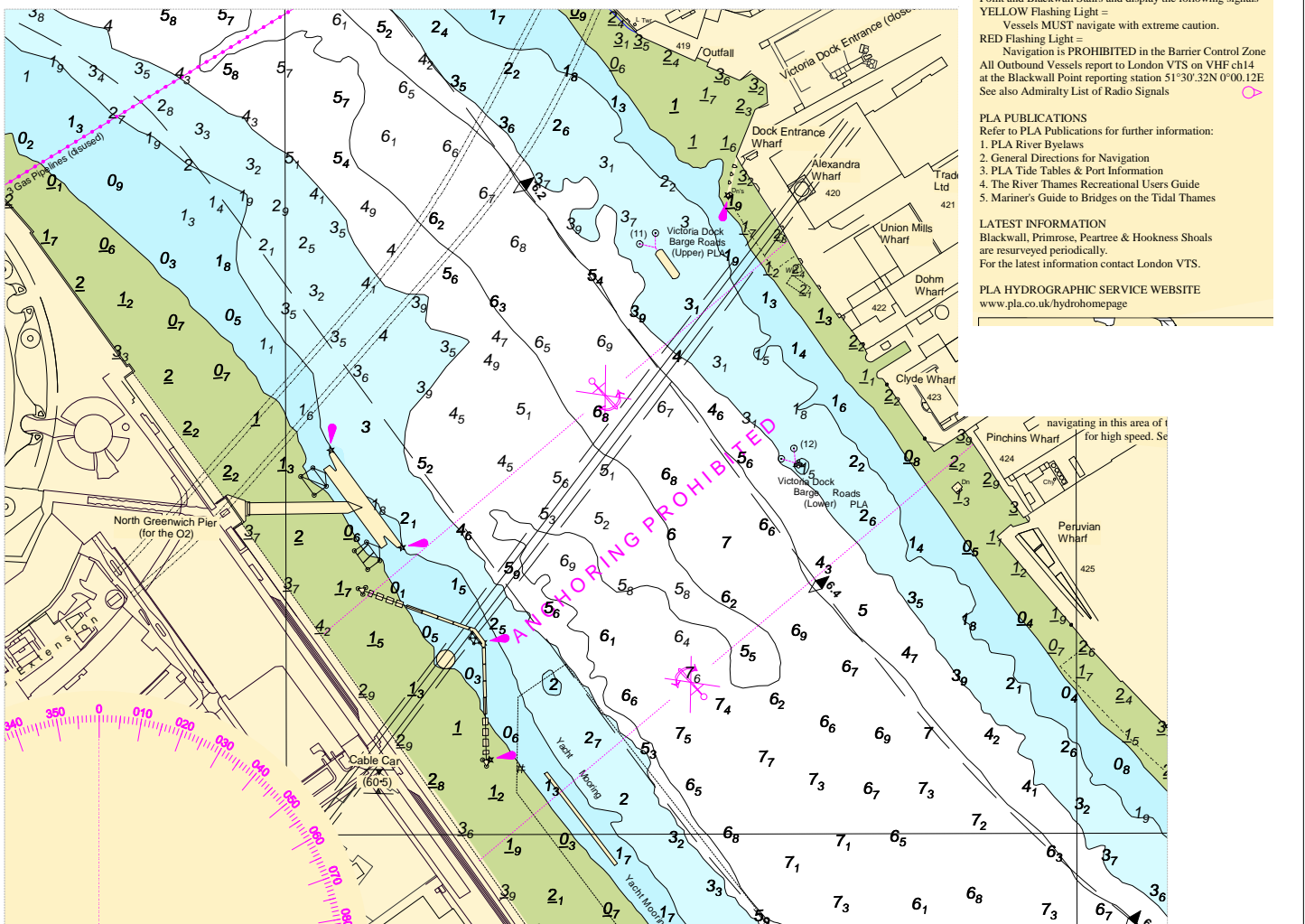
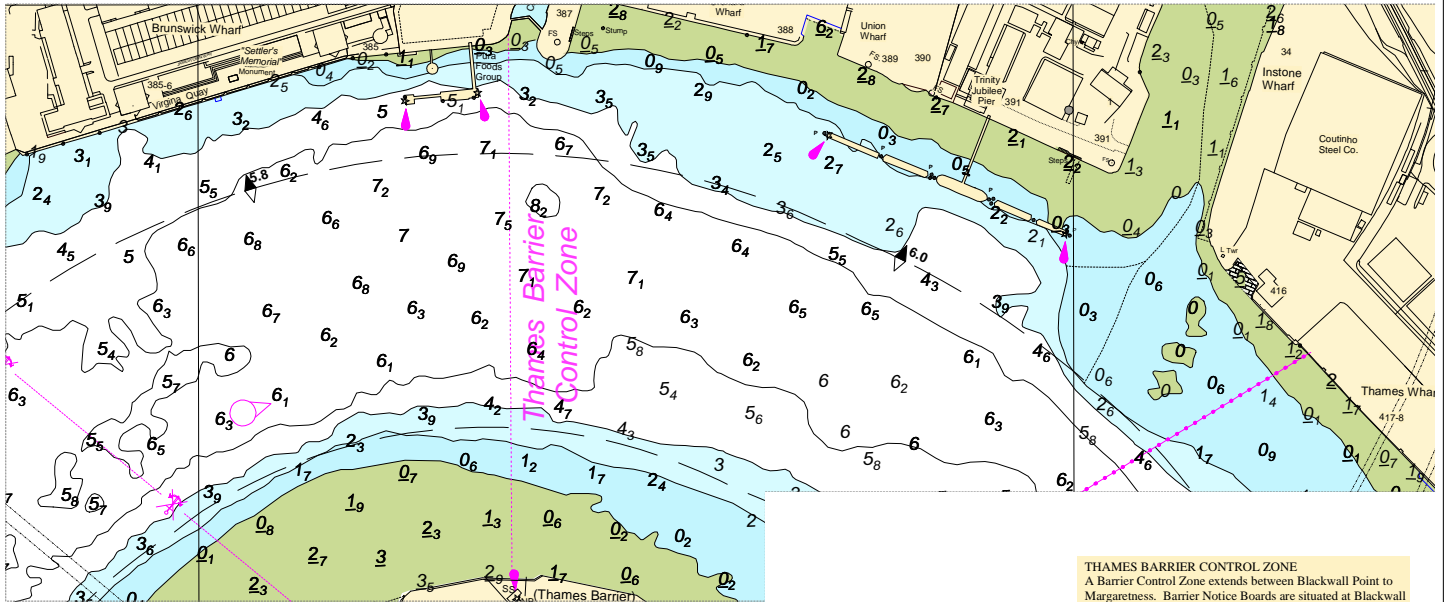
HO Ref No. 113-322-360

Previous Chart Correction: 2020/19

Chart: Blackwall Reach to Bugsbys Reach

The accompanying block correction shows:

Revised depths & Contours Blackwall Shoal Area & Victoria Dock Entrance



THAMES BARRIER CONTROL ZONE
A Barrier Control Zone extends from Blackwall Point to Margareness. Barrier Notice Boards are situated at Blackwall Point and Blackwall Stairs and display the following signals -
YELLOW Flashing Light =
Vessels MUST navigate with extreme caution.
RED Flashing Light =
Navigation is PROHIBITED in the Barrier Control Zone
All Outbound Vessels report to London VTS on VHF ch14 at the Blackwall Point reporting station 51°30.32N 0°00.12E
See also Admiralty List of Radio Signals

PLA PUBLICATIONS
Refer to PLA Publications for further information:
1. PLA River Byelaws
2. General Directions for Navigation
3. PLA Tide Tables & Port Information
4. The River Thames Recreational Users Guide
5. Mariner's Guide to Bridges on the Tidal Thames

LATEST INFORMATION
Blackwall, Primrose, Peartree & Hookness Shoals are resurveyed periodically.
For the latest information contact London VTS.

PLA HYDROGRAPHIC SERVICE WEBSITE
www.pla.co.uk/hydrohomepage