



PORT OF LONDON
AUTHORITY

Port of London Authority
Chart Correction Advice
Date: 13th March, 2020



CCA No: 2020/8

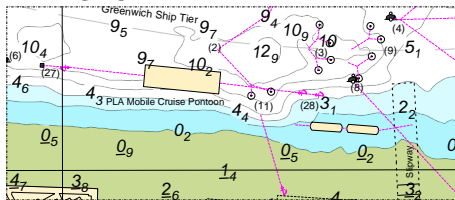
Chart: Greenwich Reach

PLA Chart No. 320
HO Ref No. 113-320-059
Previous Chart Correction: 2019/40

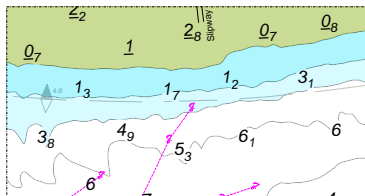
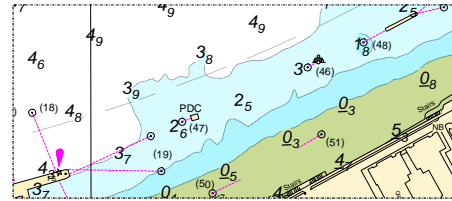
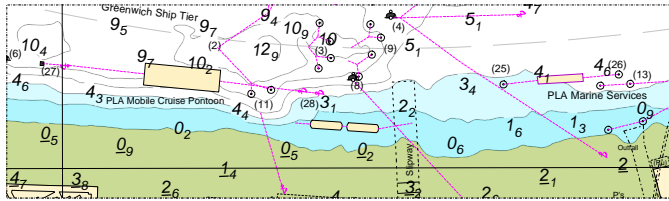
The accompanying block corrections show:
Mooring changes in the vicinity of Greenwich Pier
Removal of temporary special mark

PLA Chart No. 321
HO Ref No. 113-321-190
Previous Chart Correction: 2019/10

PLA 320



PLA 321



For further information see the PLA hydrographic service website:

<http://www.pla.co.uk/Safety/PLA-Hydrographic-Service-Published-Surveys>