



Port of London Authority
Chart Correction Advice
Date: 9th January, 2020

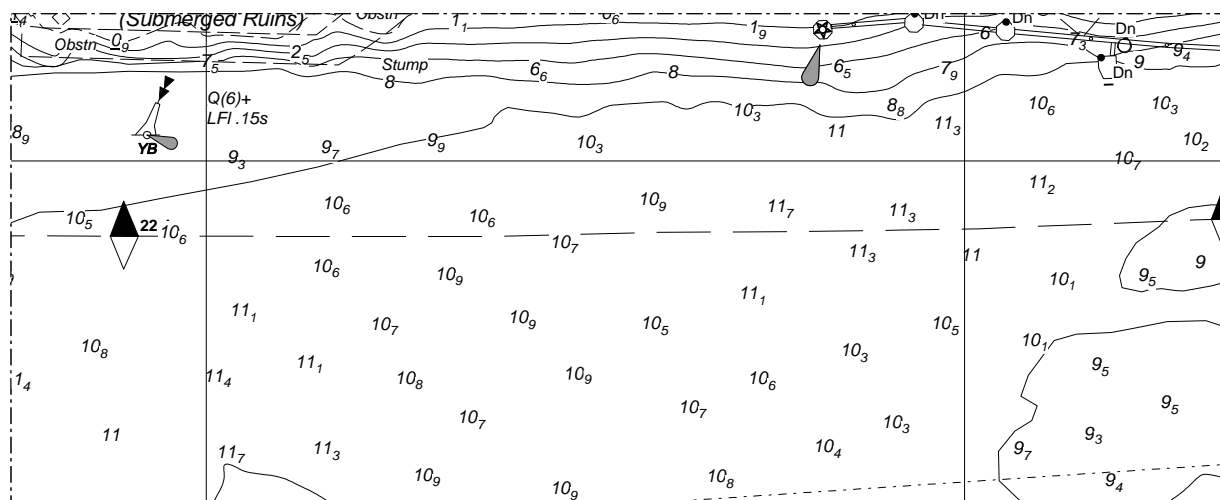


CCA No: 2020/1A

PLA Chart No. 335
HO Ref No. 113-335-775
Previous Chart Correction: 2019/34

Chart: Gravesend Reach (Upper)

The accompanying block correction shows:
Revised Depths & Contours off Tilbury Landingstage & RoRo Berth



For further information see the PLA hydrographic service website:

<http://www.pla.co.uk/Safety/PLA-Hydrographic-Service-Published-Surveys>