



PORT OF LONDON  
AUTHORITY

Port of London Authority  
Chart Correction Advice  
Date: 10th August, 2020



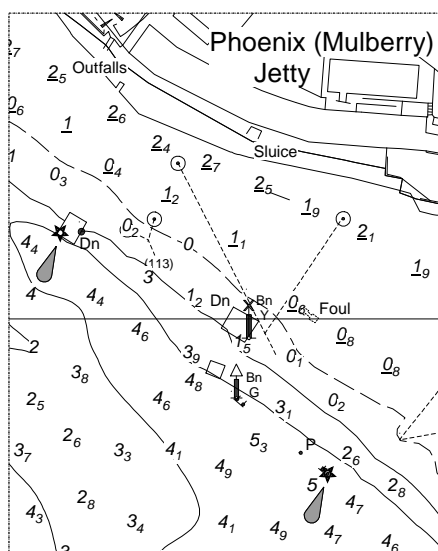
**CCA No: 2020/17**

Chart: Miscellaneous Reaches. Chart Nos. 328, 329, 331, 332 & 333 (page1)

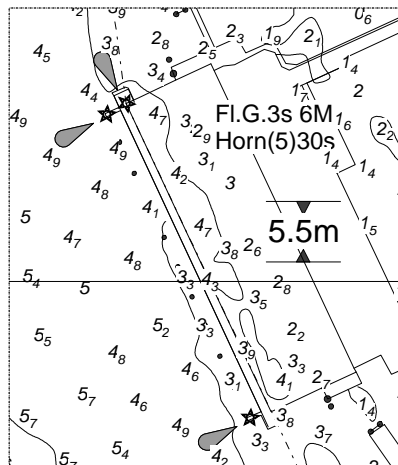
The accompanying block correction shows:

Changes to Aids to Navigation (Lights Beacons etc) as per PLA Notice to Mariners L13 of 2020

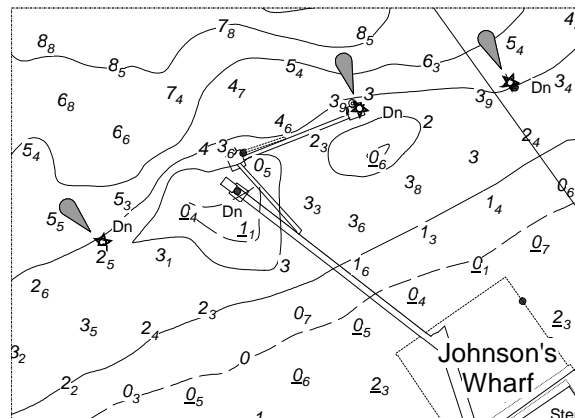
PLA Chart No. 328  
HO Ref No. 113-328-078  
Previous Correction: 2020/6



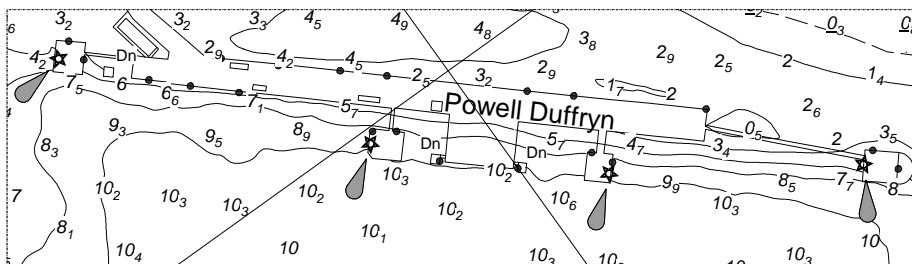
PLA Chart No. 329  
HO Ref No. 113-329-018  
Previous Correction: 2019/39



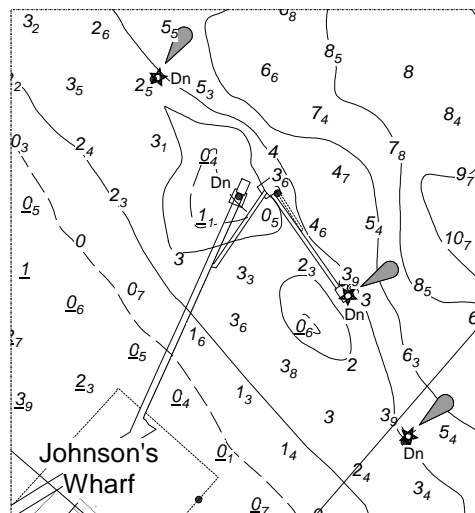
PLA Chart No. 332  
HO Ref No. 113-332-226  
Previous Correction: 2018/12



PLA Chart No. 331  
HO Ref No. 113-331-344  
Previous Correction: 2018/12



PLA Chart No. 333  
HO Ref No. 113-333-097  
Previous Correction: 2019/16



For further information see the PLA hydrographic service website:

<http://www.pla.co.uk/Safety/PLA-Hydrographic-Service-Published-Surveys>