



PORT OF LONDON
AUTHORITY

Port of London Authority
Chart Correction Advice
Date: 7th August. 2018



CCA No: 2020/16

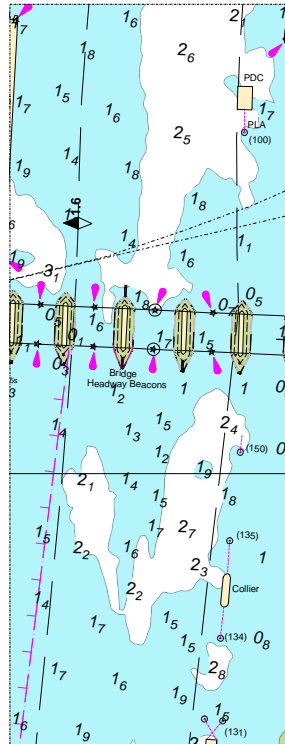
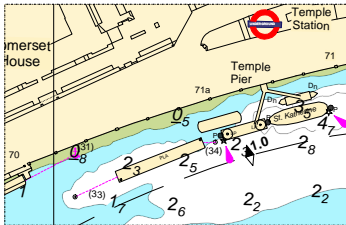
Charts: Lambeth & Kings Reaches

PLA Chart No. 316
HO Ref No. 113-316-178
Previous Chart Correction: 2020/14

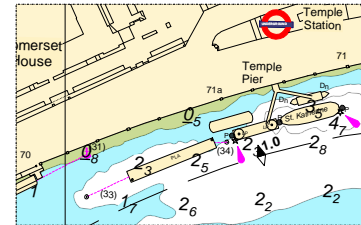
PLA Chart No. 317
HO Ref No. 113-317-130
Previous Chart Correction: 2020/14

The accompanying block correction shows
Revised Mooring pontoon by Temple Pier &
Revised depths through and approaching Westminster Bridge

PLA 316



PLA 317



For further information see the PLA hydrographic service website:

<http://www.pla.co.uk/Safety/PLA-Hydrographic-Service-Published-Surveys>