



PORT OF LONDON
AUTHORITY

Port of London Authority
Chart Correction Advice
Date: 20th July, 2020



CCA No: 2020/14

Charts: Lambeth & Kings Reaches

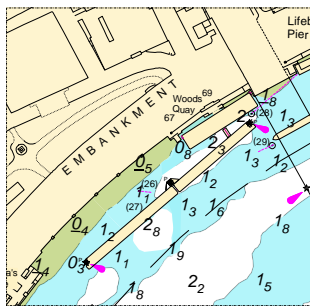
PLA Chart No. 316
HO Ref No. 113-316-178
Previous Chart Correction: 2020/9

The accompanying block correction shows:
316 Removal of Savoy Pier & New pontoon on
Woods Quay, revised Moorings & Depths

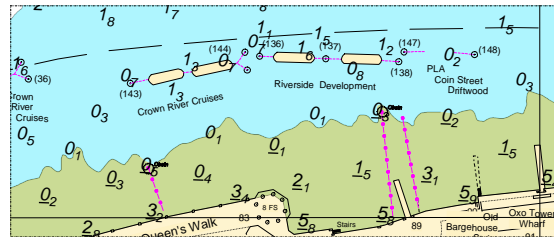
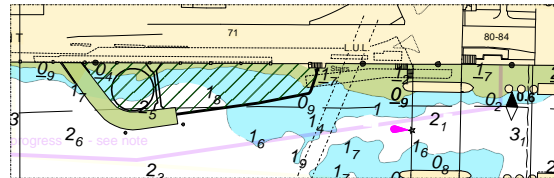
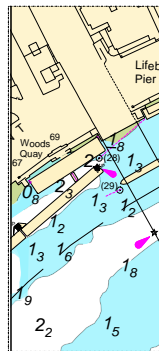
PLA Chart No. 317
HO Ref No. 113-317-130
Previous Chart Correction: 2020/9

317 Revised Moorings & Depths around Woods Quay
significant depth changes between Waterloo Bridge & Blackfiars Bridges

316



317



For further information see the PLA hydrographic service website:

<http://www.pla.co.uk/Safety/PLA-Hydrographic-Service-Published-Surveys>