



PORT OF LONDON
AUTHORITY

Port of London Authority
Chart Correction Advice
Date: 4th December, 2019



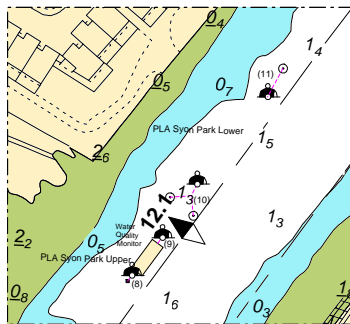
CCA No: 2019/38

Chart: CHURCH FERRY, ISLEWORTH to
BRENTFORD QUAY

PLA Chart No. 305
HO Ref No. 113-305-011

Previous Chart Correction: New Edition 2016

The accompanying block correction shows:
Installation of two new buoys (8) & (9) forming mooring PLA Syon Park Upper.
Barge relocated between these buoys from between mooring buoys (10) & (11)
and this mooring being named PLA Syon Park Lower



For further information see the PLA hydrographic service website:

<http://www.pla.co.uk/Safety/PLA-Hydrographic-Service-Published-Surveys>