



PORT OF LONDON
AUTHORITY

Port of London Authority
Chart Correction Advice
Date: 22nd July, 2019

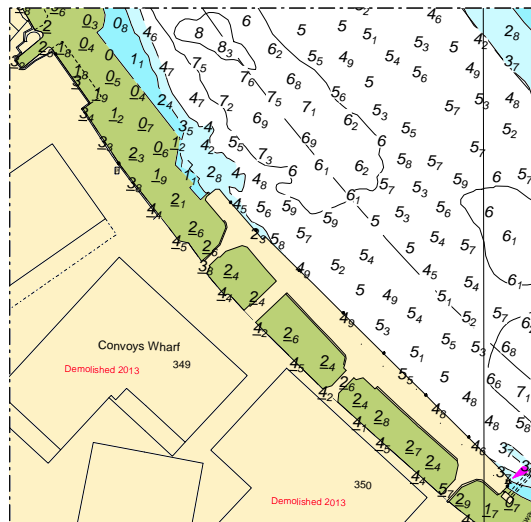
CCA No: 2019/22



Chart: Limehouse Reach to Greenwich Reach

PLA Chart No. 320
HO Ref No. 113-320-059
Previous Chart Correction: 2017/27

The accompanying block correction shows:
Removed jetty & revised depths & contours - Convoys Wharf



For further information see the PLA hydrographic service website:

<http://www.pla.co.uk/Safety/PLA-Hydrographic-Service-Published-Surveys>