



PORT OF LONDON
AUTHORITY

Port of London Authority
Chart Correction Advice
Date: 13th March, 2018

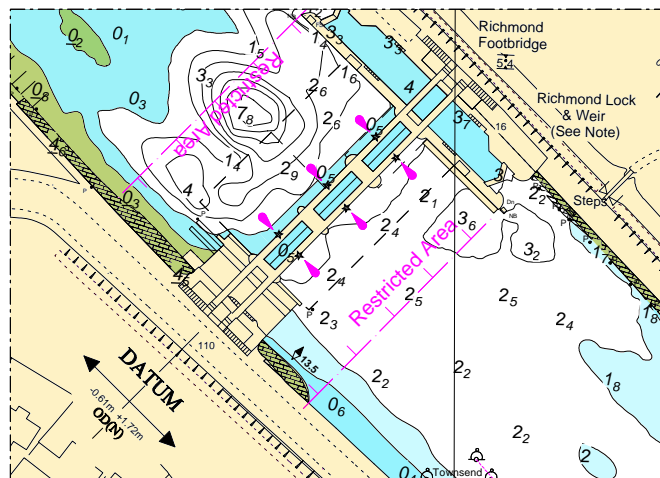


CCA No: 2018/6

Chart: PETERSHAM AIT to
RICHMOND LOCK

PLA Chart No. 303
HO Ref No. 113-303-014
Previous Chart Correction: 2017/47

The accompanying block correction shows:
New Richmond Lock, Weir & Footbridge Restricted Area and the chart notes



DEPTHS

Depths are in metres and are reduced to Chart Datum being 1.72m above Ordnance Datum (Newlyn), which is the maintained water level between Teddington and Richmond Locks. (The sluices at Richmond foot bridge are lowered at approx. half ebb and raised again at half flood Tide).

SOUNDINGS

All sub-tidal areas are surveyed by MBES giving 100% coverage to IHO S44 order 1A.

HEIGHTS

Heights are in metres. Underlined figures are drying heights above Chart Datum; all other heights are above MHWS.

POSITIONS

Positions are referred to WGS84.

DISTANCES

Distances from London Bridge are shown along the N channel edge in Sea Miles and tenths against this symbol \blacklozenge .

LADDERS

Permanent ladders, the exact position or condition of which cannot be guaranteed, are shown thus \bullet .

BRIDGES - Headway at the centre span above MHWS:

Richmond Road Bridge = 5.3m
Richmond Rail Bridge = 5.4m
Twickenham Bridge = 5.9m.
Richmond Footbridge = 5.4m

LIGHTS ON JETTIES

Light stars without legends represent two fixed lights displayed vertically. They are seen as red to port and green to starboard when proceeding upriver.

TOPOGRAPHY

The shore features on this chart are based largely on Ordnance Survey digital map data with the permission of the Controller of Her Majesty's Stationery Office. © Crown Copyright 2015. All rights reserved. Ordnance Survey Licence number 100022150.

MOORINGS

Moorings screws are shown in their true position thus \odot and buoys shown as symbols. Buoy numbers shown (20) are PLA references.

RICHMOND LOCK & WEIR

Closure of weir gates and prohibition of passage through weir arches is shown by three red discs below each arch during hours of daylight and three red lights at night.
Weir gate sill is 1.3m below ODN
Crest of boat rollers is 2.1m above ODN
Lock upper sill is 1.4m below ODN
Lock lower sill is 2.0m below ODN
Lock Length 76m, width 7.9m
Headway within the lock above MHWS of 5.1m.

RESTRICTED AREA:

Mariners should not enter the Richmond Lock, Weir & Footbridge Restricted Area whilst the weirs are in the lowered position, or when they are being operated.
Only when the weir gates are fully raised and the Closed Arch signs have been removed, is it permitted to navigate into the restricted area and through Richmond Footbridge No2 or No3 arches.
Only those vessels manoeuvring on or to the Lock island berths, vessels engaged in emergency operations or smaller vessels wishing to utilise the boat rollers in No1 arch are exempt from this requirement

PLA REFERENCES

The numbers shown on the shore and in parenthesis in the river adjacent to moorings refer to PLA licences.

PLA PUBLICATIONS

Refer to PLA Publications for further information:

1. PLA River Byelaws
2. General Directions for Navigation
3. PLA Tide Tables & Port Information
4. The River Thames Recreational Users Guide
5. Rowing on the Tideway

PLA HYDROGRAPHIC SERVICE WEBSITE

www.pla.co.uk/hydrohomepage

Tide Details, referred to levels at RICHMOND BRIDGE.	Ordnance Datum	Chart Datum
Highest Recorded (1978)	5.47	3.75
Highest Astronomical Tide	4.91	3.19
Mean High Water Springs	4.18	2.46
Mean High Water	3.68	1.96
Mean High Water Neaps	3.18	1.46
Chart Datum (Maintained Level)	1.72	-----
Ordnance Datum (Newlyn)	-----	-1.72

For further information see the PLA hydrographic service website:

<http://www.pla.co.uk/Safety/PLA-Hydrographic-Service-Published-Surveys>