



PORT OF LONDON
AUTHORITY

Port of London Authority
Chart Correction Advice
Date: 24th September, 2018

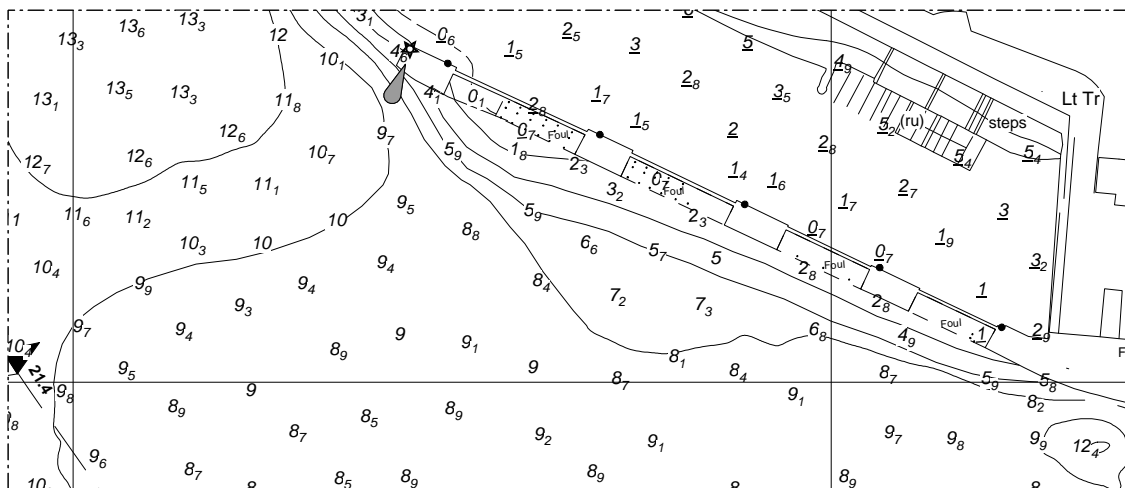


CCA No: 2018/23

Chart: Gravesend Reach (Upper)

PLA Chart No. 335
HO Ref No. 113-335-609
Previous Chart Correction: 2018/10

The accompanying block correction shows:
Revised Soundings & Contours Tilbury Dock Entrance (N)



For further information see the PLA hydrographic service website:

<http://www.pla.co.uk/Safety/PLA-Hydrographic-Service-Published-Surveys>