



Port of London Authority  
Chart Correction Advice  
Date: 2nd August, 2018



**CCA No: 2018/20**

Chart: Sea Reach  
CANVEY ISLAND & SOUTHEND-ON-SEA

PLA Chart No. 342  
HO Ref No. 113-342-102  
Previous Chart Correction: 2014/25

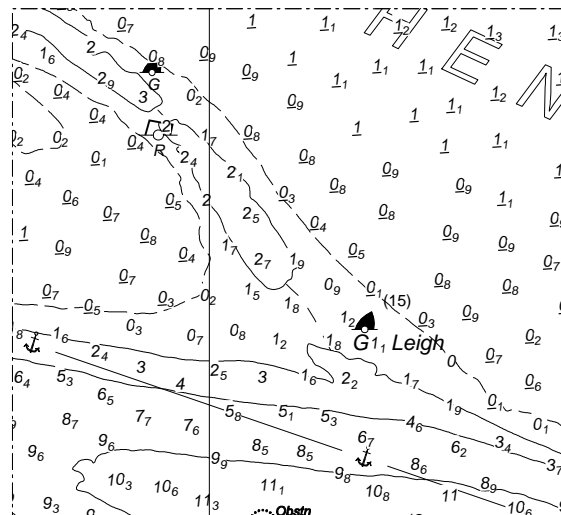
The accompanying block correction shows:

The Leigh Buoy was moved on the 23rd July to mark the starboard side (approx 1m contour) of the Hadleigh Ray / Ray Gut channel

As per NtoM L13 of 2018

'Mariners and recreational users are advised that the Leigh Buoy has been moved approximately 170m to the NNE of her current charted position to reflect changes in depths in the area.

The buoy is now in position 51°31.09N 00°42.72E.'



For further information see the PLA hydrographic service website:

<http://www.pla.co.uk/Safety/PLA-Hydrographic-Service-Published-Surveys>