



Port of London Authority  
Chart Correction Advice  
Date: 29th December, 2017



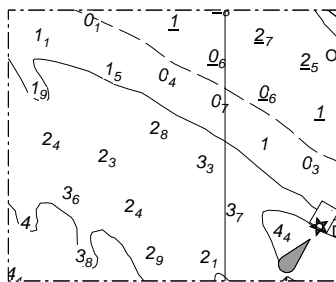
**CCA No: 2017/43**

Chart: Halfway Reach to Erith Reach

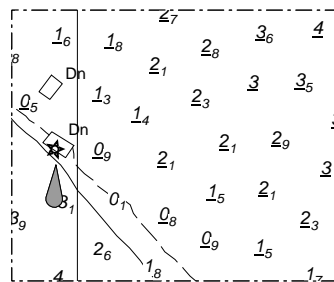
PLA Chart No. 328  
HO Ref No. 113-328-078  
Previous Chart Correction: 2017/32

The accompanying block correction shows:  
The removal of Phoenix Jetty screw moorings No.s 112 & 114

112 (upper)



114 (lower)



For further information see the PLA hydrographic service website:

<http://www.pla.co.uk/Safety/PLA-Hydrographic-Service-Published-Surveys>