



PORT OF LONDON
AUTHORITY

Port of London Authority
Chart Correction Advice
Date: 24th October 2017



CCA No: 2017/36

Chart: Woolwich Reach (Lower) & Gallions Reach

PLA Chart No. 324
HO Ref No. 113-325-085
Previous Chart Correction: 2017/16

PLA Chart No. 325
HO Ref No. 113-325-228
Previous Chart Correction: 2017/12

The accompanying block corrections show

The reinstatement of PLA North Woolwich Barge Roads mooring (TTT No.09)

and on PLA 325, Four screw moorings (115) and (116)
have been pulled and permanently removed from the riverbed.
The associated ground tackle & mooring buoys have been
removed and the East Woolwich Lower Tier is discontinued

Chart 325

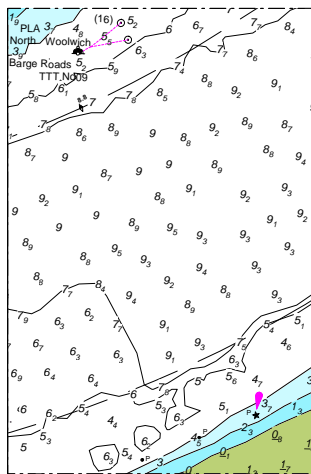
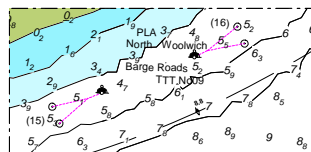


Chart 324



For further information see the PLA hydrographic service website:

<http://www.pla.co.uk/Safety/PLA-Hydrographic-Service-Published-Surveys>