



PORT OF LONDON
AUTHORITY

Port of London Authority
Chart Correction Advice
Date: 30th August, 2017

CCA No: 2017/26

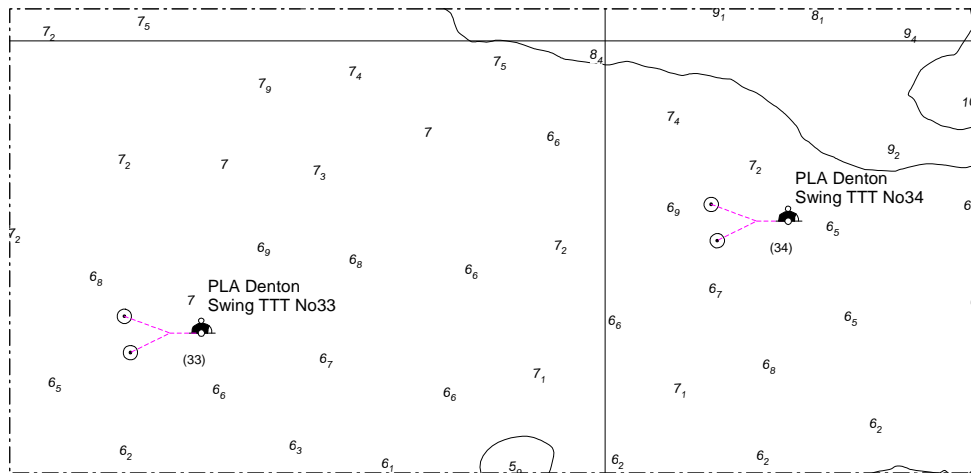


Chart: Gravesend Reach (Lower)

PLA Chart No. 337.
HO Ref No. 113-337-132.
Previous Chart Correction: 2016 New Edition

The accompanying block correction shows:

19/07/17 two new screw moorings were installed down river from 'PLA Denton Small Ship'
These are named 'PLA Denton Swing TTT No33' and 'PLA Denton Swing TTT No34'
and numbered (33) & (34)



For further information see the PLA hydrographic service website:

<http://www.pla.co.uk/Safety/PLA-Hydrographic-Service-Published-Surveys>